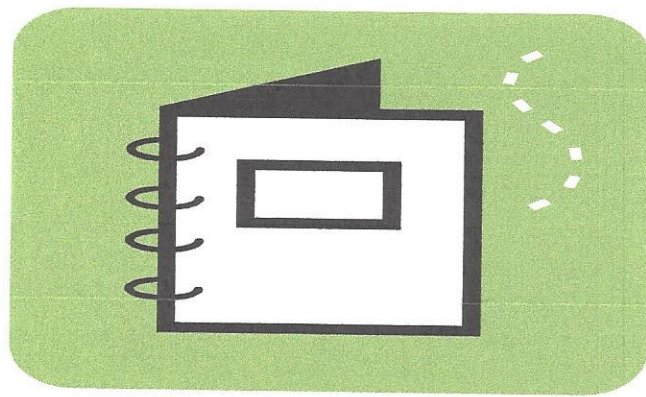


ANNUAL REPORT

SY 2015-2016



Roots Public Charter School

ANNUAL REPORT

2015- 2016

Respectfully Submitted on Behalf of the Board of Directors

Gilda Sherrod-Ali – Chairperson

September 6, 2016

By

ROOTS PUBLIC CHARTER SCHOOL

15 Kennedy Street Northwest

Washington, DC 20011

Voice: 202-882-8073 Fax: 202-882-8075

Website: www.rootspcs.org

Grades: Pre-K3 -5

Dr. Bernida L. Thompson, Principal

Founders
Bernida Thompson
Patricia Jacobs
Jennifer Gibbs-Phillips

ROOTS PUBLIC CHARTER SCHOOL ORGANIZATIONAL FLOWCHART

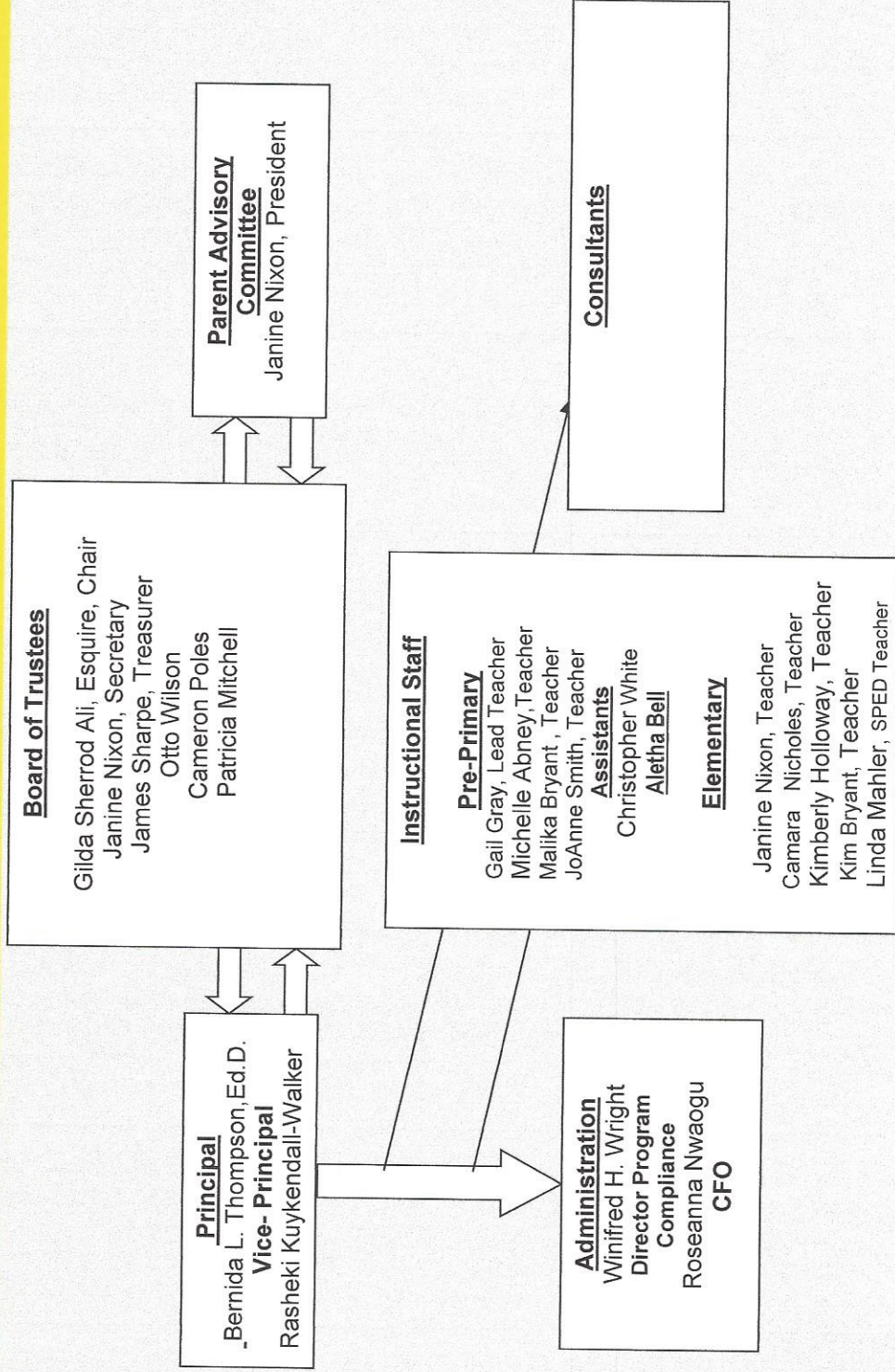


TABLE OF CONTENTS

NARRATIVE

I. SCHOOL DESCRIPTION	2
A. MISSION STATEMENT	
B. SCHOOL PROGRAM	3
II. SCHOOL PERFORMANCE	5
A. PERFORMANCE & PROGRESS	5
B. LESSONS LEARNED	6
C. UNIQUE ACCOMPLISHMENTS	7
D. LIST OF DONORS	10
III. DATA REPORT	11
IV. APPENDICES	12
a. STAFF ROSTER	
b. TEACHER QUALIFICATIONS	
c. SCHOOL DATA SUMMARY	
d. BOARD OF DIRECTOR'S ROSTER	
e. UNAUDITED YEAR-END 2015-16 FINANCIAL STATEMENT	
f. APPROVED SY 2016– '17 Budget	

SCHOOL PROGRAM

I. School Description

A. Mission Statement

The Mission of the *Roots Public Charter School* is to inspire leadership for tomorrow by providing students with an Africentric environment and culturally relevant curriculum which will motivate them toward academic excellence, exemplary character, and social responsibility as they develop their own talents. Although the political bureaucracy tends to equate student learning as measured by standardized test scores, we know that the true measurement of student learning is much more inclusive of real and practical applications over time. Therefore, **Roots PCS via African-Centered Education measures success by one's character development and mastery of the basic skills, exposure to world knowledge, and preparedness to provide practical, productive value to society.**

I. School Description

B. School Program

The curriculum we use is our own African-Centered Interdisciplinary Multi-Level Hands-On Science. It's objective is to build competencies among our students covering all cognitive subjects as we impart cultural values by way of the Nguzo Saba, Adinkra symbols, and literature review. The methodology centers around African pedagogy: visual, verbal/auditory, kinesthetic/tactile, camaraderie, and the Nguzo Saba. The design and instructional approach is one where several classes are within an open-space center. These classes are multi-grade. There's the 3-5 year olds, the 1st-2nd grade, and the 3rd-5th grade. Our program consists of individualized and small group instruction for language arts and math in the morning. In the afternoon there's interdisciplinary social studies, science, music, art, and PE. Students are engaged in oral and written presentations and contests. We participate in the National School Lunch Program and also give free breakfast. We teach African Drumming and Dance as well as DC Hand Dance each once a week. We have field trips and science presentations giving our students experiences in the world outside the classroom. Our students are also engaged in exposure based learning of the languages of Spanish, French, and Kiswahili. They are

participants, too, in the Citywide Science Fair, Spelling Bee, and Geography Bee.

Roots PCS is a family centered school with required parent involvement. Research shows that the single most important factor in a child's success at school is parent involvement in the child's education. All public charter schools are schools of choice. Parents who choose Roots make the choice of agreeing that parent involvement is a key factor in our program. Parents sign a contract of responsibility and are automatically part of our Parent Advisory/Action Council (PAC). They are required to work on a committee of their choice, support all fund raisers, supervise their child's homework, attend all PTA's, and volunteer at least one day in the classroom. The PAC committees are: The supplies committee, the classroom helpers committee, the publicity committee, the secretarial committee, the fund raiser committee, the curriculum committee, the maintenance committee, and the hospitality committee.

II. School Performance

A. Performance and Progress

1. Roots Public Charter School is substantially meeting our mission set forth in our charter. From our morning opening rituals to our throughout the day Nguzo Saba values development, Africentric curriculum, and wall displays of African greatness, we promote and secure the connection of Mother Africa within our children. We tell them daily that they have genius in their genes. This is a way of preparing our students to break the chains of psychological conditioning that attempt to keep them powerless. We promote the citywide science fair, geography bee, and spelling bee as well as sponsor our own oratory contest. This encourages student success leading to self-reliance. We also provide a strong African-Centered learning environment via the family style multi-grade open-space classroom with teachers following their students for more than one year.

2. Our school is also meeting its goal of academic achievement expectation. By guiding students toward academic excellence we've accomplished the following charter goals.

Roots PCS - Goals and Academic Achievement Expectations	Goal met or unmet	Progress toward goals
1. Roots PCS will continue to demonstrate a commitment to serving students (FAPE- free appropriate public education) with disabilities by completing the Public Charter School Board's Quality Assurance Review (QAR) in the fall and create a Special Education QAR Action Plan in collaboration with PCSB staff, and achieve "in place" for all indicators of the QAR by the end of the spring of 2016 and until its next five-year review school year 2018-2019 and beyond.	Goal met	Roots PCS achieved 92% QAR by Spring 2016
2 At least 75% of Pre-Kindergarten students will meet or exceed	Goal Met	Roots PCS met this goal. 82% of pre-kindergarten students met or exceeded widely held expectations of growth from

widely held expectations of growth from the Fall to the Spring administration of the GOLD Literacy assessment.		the fall to spring administrations of the GOLD literacy assessment.
3. At least 75% of students in kindergarten through second grade will increase by at least one reading level or maintain proficiency by the spring administration of the Scholastic Reading assessment (SRA) reading mastery test.	Goal Met	Roots PCS met this goal. 97% of K-2 nd grade students achieved proficiency on the SRA reading mastery test spring 2016.
4. At least 75% Kindergarten through second grade students will score proficient on the Scholastic Reading assessment (SRA) reading mastery test.	Goal Met	Roots PCS met this goal. 97% of Kindergarten through 2 nd graders scored proficient on the SRA reading mastery test.
5. The percent of students scoring proficient or advanced on the state reading assessment will meet or exceed the state average at each grade level 3-5 each year.	Goal Met	Roots PCS met this goal. 35% of students grade 3-5 scored proficient or above on the PARCC reading assessment in the spring 2016, which was above the state average of 28%.
6. At least 75 % of Pre-Kindergarten students will meet or exceed widely held expectations per the	Goal Met	Roots PCS met this goal. 80% of PK students scored proficient or advanced on the math Gold assessment in Spring 2016.

growth report from the Fall to the Spring administration of the <i>GOLD math assessment</i> .		
7. At least 75% of students in grades K through 2 will advance one level or maintain proficiency on the My Math math assessment.	Goal Met	Roots PCS met this goal. 100% of students in grades K-2 scored proficient or above on the My Math Assessment in June 2016.
8. The percent of students scoring proficient or advanced on the state math assessment will meet or exceed the state average at each grade level 3-5	Goal Met	Roots PCS met this goal. 35% of students grade 3-5 scored proficient or above on the PARCC math assessment in June 2016 which was above the state average of 27%.

Our students showed progress toward proficiency in reading and math by their **mastery of the basic skills, 65% scored basic or above in each reading and math.** It is important to note that all education statistics and human growth and development data substantiates the fact that there are multiple intelligences. Everyone gaining basic skills is a reasonable goal. However, individual talents are achieved to proficiency based on a person's unique gifts and interests. Only 10% of the general population tend to test proficient (gifted) in mathematical and language arts/reading. (Alfie Kohn, 1999 Ed. Leadership) These are your mathematicians, editors, etc. Standardized tests are only one snapshot of an academic trivia pursuit driven by political gains. It often does not support the evidence teachers have collected all year about the progress and achievement of students.

ACCOMPLISHMENTS

Achieved our African-Centered Mission

1. Monthly science themes with African-Centered literature review
2. Walls depicting Black culture throughout the school
3. Morning culture class rituals with songs and pledges
4. Monthly celebration of an ancestor & living Black s/hero
5. Field trips around Black Culture: Black Rodeo, Embassy of Ghana, Museum of African Art, African American Civil War Museum, Frederick Douglass Museum; Soul Circus, Blacks in Wax Museum, etc
6. Weekly African Dance & Drumming class, DC Handdance class, Obi's cultural/African history and theatrical class
7. Annual Malcolm X oratorical Contest
8. Language Exposure to Spanish (Brazil & other Spanish speaking countries), French (via African French speaking countries), & Kiswahili (the only national African language in Africa)
9. Annual African Centered Children's Masquerade Disco; Black Love Skate Party
10. Gail Stewart (teacher) inducted in the DC OSSE Educator Talent Pool
11. DC Association of Chartered Public Schools chose one of our parents (Dallas Cooper) as Most Outstanding Parent in the chartered schools, our student (Ajani Bell) as most outstanding student, and Melinda Shoatz as most outstanding all-around student this year.
12. Fifth grade African-American Historical and Cultural Tour through Walterboro, Charleston, St. Helena Island, & Beaufort, SC; Savannah & Riceboro, GA
13. Roots alumni represented in colleges around the country

B. Lessons Learned and Actions Taken

Teachers were very efficient in collecting academic data about the student learning throughout the weeks of school. They used this data to drive instruction for the next weeks. Teachers also used the Plato Assessment System as Benchmarks of performance and skills. This was used as our school-wide assessment done quarterly aligned with the PARCC. We tested in September to establish a baseline, then in December, March, and June for

benchmarks. The day to day data about teaching and learning was most helpful to the teachers. Teachers also used the PARCC practice test and release items. These are the actions taken, and we learned that no matter how much our students learned, no matter how much exposure they get to fantastic knowledge, the standardized test doesn't come anywhere close to measuring their true knowledge and skills.

The trivia questions on these standardized tests are geared toward a socio-economic and cultural group of people that are not the norm. The norm or average adult wouldn't pass these tests. When a person is being trained for any job, they are trained on the exact knowledge and skills they need to know for that particular job. This is how they score proficient. This is not what happens with standardized tests. They are secretive. No one can see the questions or know what is on them. Therefore, they are called "Weeders." Their purpose is to pull out the best test takers – academically talented. This does not help the masses of average learners. What helps them is to have a curriculum that teaches exactly what will be tested. The students will then have the standard, the activity, and the questions to match.

Actions Taken

Roots updated our African-Centered Interdisciplinary Multi-Level Hands-On Science Curriculum to include all of the Common Core Standards this year. We also will change our Language Arts Program from the SRA Program to the New Journeys Program. We are doing this because SRA has not been updated since 2003 and isn't aligned to Common Core Standards, whereby Journeys is a 2016 edition aligned to Common Core Standards.

C UNIQUE ACCOMPLISHMENTS

Roots Public Charter School is proud of our teachers, students, and educational system. The true goal of education is to develop productive citizens, bringing out the potential and talents of every student, and understanding their diversity.

Exposure and experiences are the keys to making this happen. Roots is monitored and approved as an accredited elementary school by Middle States Association of Colleges and Schools. Also Roots is monitored and approved by the National

Association for the Education of Young Children. The Vice Principal and I attended and presented a workshop at the National Black Child Development Conference (NBCDI). As a certified Red Cross instructor, I also did training for our teachers, certifying them for Adult/Pediatric First Aid, CPR, AED, as well as being a DC Certified Early Childhood Education Trainer, trained my staff in Africentric Education. We believe “Children of the Sun have genius in their genes. They are the vanguard of tomorrow. Youth are the Roots of Change.”

Accomplishments, Awards, and other Recognition:

1. We were approved and funded for a Technology Grant, PE Grant, and a National Black Child Development Grant.
2. Our students participated in the Citywide Spelling Bee, Geography Bee, Science Fair, and the Theatrical Mass Emphasis Co.
3. The Minority Women In Science invited our students to free gifts from their Science Holiday Gift Store.
4. Our students were invited to the Hard Bargain Farm for an overnight activity.
5. Other partners of ours were DC Arts & Humanities Education Collaborative, the Kennedy & 1st St. Block Club, DC Police Dept., The ARC, The Foster Grandparent Program of UPO, Temple Hills Skate Palace, The Air and Space Museum, and the Natural History Museum

Top Performing Schools - Above State Average for Meeting Expectations and Above in ELA (26%) and Math (27%) Grades 3-8					
School Name	Ward	ELA		Math	
		Approached Expectations and Above	Met Expectations and Above	Approached Expectations and Above	Met Expectations and Above
DC Prep PCS - Edgewood Elementary School	5	78%	56%	87%	69%
Washington Latin PCS - Middle School	4	87%	70%	77%	53%
KIPP DC - PCS Promise Academy	7	68%	47%	85%	74%
DC Prep PCS - Edgewood Middle School	5	81%	58%	86%	59%
BASIS DC PCS	2	86%	59%	83%	58%
Washington Yu Ying PCS	5	74%	51%	82%	59%
KIPP DC - Lead Academy PCS	6	69%	41%	85%	64%
Latin American Montessori Bilingual PCS	4	76%	57%	67%	48%
KIPP DC - Heights Academy PCS	8	63%	29%	84%	64%
DC Prep PCS - Benning Elementary School	7	61%	44%	82%	48%
District of Columbia International School	1	75%	52%	67%	34%
Two Rivers PCS - 4th Street	6	71%	43%	73%	40%
Mundo Verde Bilingual PCS	5	64%	38%	70%	43%
DC Prep PCS - Benning Middle School	7	70%	34%	77%	46%
DC Bilingual PCS	5	68%	38%	67%	39%
Early Childhood Academy PCS	8	60%	29%	83%	49%
KIPP DC - KEY Academy PCS	7	68%	32%	73%	43%
Elsie Whitlow Stokes Community Freedom PCS	5	75%	45%	67%	28%
E.L. Haynes PCS - Elementary School	4	57%	32%	64%	40%
Roots PCS	4	65%	35%	65%	35%
Inspired Teaching Demonstration PCS	5	61%	36%	58%	33%
Achievement Preparatory Academy PCS - Elementary	8	48%	31%	65%	29%

Most Improved Citywide Schools: Grades 3-8

In 16 citywide public charter schools the percentage of students scoring a 4 or 5 on the ELA and Math assessments, improved by 5 or more percent

Improvement in Grades 3-8 in ELA and Math Meeting Expectations and Above					
School Name	Ward	ELA		Math	
		Met Expectations and Above (4+)	Improvement in Met Expectations and Above (4+)	Met Expectations and Above (4+)	Improvement in Met Expectations and Above (4+)
KIPP DC - Quest Academy PCS	7	28%	↑ 19%	49%	↑ 24%
Early Childhood Academy PCS	8	29%	↑ 7%	49%	↑ 27%
KIPP DC - Heights Academy PCS	8	29%	↑ 14%	64%	↑ 19%
Friendship PCS - Chamberlain Elementary School	6	23%	↑ 18%	38%	↑ 15%
KIPP DC - Northeast Academy PCS	5	44%	↑ 23%	19%	↑ 7%
Friendship PCS - Blow Pierce Middle School	7	27%	↑ 13%	25%	↑ 14%
Perry Street Preparatory PCS	5	21%	↑ 13%	15%	↑ 13%
KIPP DC - PCS Promise Academy	7	47%	↑ 16%	74%	↑ 9%
Harmony DC PCS School of Excellence	5	20%	↑ 10%	27%	↑ 12%
Hope Community PCS - Tolson	5	25%	↑ 10%	22%	↑ 11%
DC Bilingual PCS	5	38%	↑ 6%	39%	↑ 12%
Center City PCS - Shaw	6	25%	↑ 8%	29%	↑ 9%
Friendship PCS - Woodridge Middle School	5	27%	↑ 9%	25%	↑ 6%
DC Prep PCS - Benning Elementary School	7	44%	↑ 6%	48%	↑ 6%
Friendship PCS - Technology Preparatory Middle School	8	15%	↑ 6%	8%	↑ 5%
KIPP DC - KEY Academy PCS	7	32%	↑ 5%	43%	↑ 5%

For a breakdown on student performance at individual citywide public charter schools, visit <http://www.dcpccb.org/evaluating/parcc> (<http://www.dcpccb.org/evaluating/parcc>)

Students in Citywide High Schools

Twenty-three percent of public charter high school students scored a 4 or 5 on the ELA assessment, and 11% of public charter high school students

ROOTS PUBLIC CHARTERED SCHOOL, INC

LIST OF DONORS /GRANTORS HAVING VALUE EQUAL TO OR EXCEEDING \$500 DURING 2015 -2016 SY

1	15 Kennedy Street Associates, LP	31,000
2	NBCDI Walmart Grant	725
3	William Billy Hall	1,000
4	OSSE EGMS	7,500
5	OSSE sch Tech.	4,612
6	OSSE PE/HEALTH	7,935
7	Well Fargo Bank	1,000
8	Bill & Sierra Leone Dixon	500
		-
		-
		54,272

APPENDICES

ROOTS PUBLIC CHARTER SCHOOL

15 Kennedy Street Northwest
Washington, DC 20011
Phone: 202-882-8273 –Fax: 202 882-8075
Website: rootspcs.org

STAFF ROSTER

SY 2015-2016

Bernida L. Thompson, Ed. D

bthompson@rootspcs.org

Principal

Rasheki Kuykendall-Walker

rkuyendall@rootspcs.org

Vice-Principal

Winifred H. Wright

wwright@rootspcs.org

Program Compliance Director/SPED Data Administrator

Roseanna N. Nwaogu

rnwaogu@rootspcs.org

CFO

Pre-Primary Teachers

Gail Gray – Lead Teacher

Kim Payne Bryant

JoAnne Smith

Michelle Abney-Love

Elementary Teachers

Sheila Evans

Grade: 1st 2nd

Janine Nixon

Grade 1st & 2nd

Camara Nicholes

Grade: 3rd & 4th

Kimberly Holloway

Grades: 4th & 5th

Linda Mahler

SPED Teacher

Teacher/Assistants

Christopher White

Alethea Bell

Teacher's Qualifications

No Child Left Behind guidelines mandate that parents have a right to information concerning teacher's qualifications/credentials. As of August 2015:

<u>Name</u>	<u>Credentials</u>	<u>Years of Experience</u>	<u>Position</u>
Kim Bryant	AA	26	Pre-School Teacher
Gail Gray	MA	26	Lead Pre-School Teacher
Joanne Smith	AA	16	Pre-School Teacher
Michelle Abney- Love	CDA	13	Pre-School Teacher
Alethea Bell	BA	2	Pre-Primary Assistant
Christopher White	BA	2	Pre-Primary Assistant
Bernida Thompson	Ed D Early/Middle Childhood Education Praxis II – Elem. Ed. Standard Elem. License Standard MS. License	47	Principal
Janine Nixon	BS Business Admin	1	Elementary Teacher
Sheila Evans	Praxis II – Elem. Ed. BA, MA, MBA	17	Elementary Teacher
Camara Nicholes	BA Psychology Praxis II – Elem. Ed.	15	Elementary Teacher
Kimberly Holloway	Teaching Diploma BA Elem Ed Praxis II – Elem. Ed	19	Elementary Teacher
Linda Mahler	BA Liberal Arts MA Bilingual SPED JD- MD Bar Association.	10	Special Education Teacher

* Child Development Associate *Bachelor of Arts * Master of Science *Doctorate of Education
 * Juris Doctorate – (Law) * Bachelor of Science *Master of Arts

DATA TEMPLATE

Roots Public Charter School

WEB-SITE: www.rootspcs.org

2016

Monday, January 18th

Martin Luther King, Jr.'s Birthday (SCHOOL CLOSED)

Sunday, February 14th

Black Love Skating Party

Monday, February 15th

President's Day (SCHOOL CLOSED)

Thursday, March 10th

(Mid Semester) PTA/Parent Conference 6pm –8pm ALL PARENTS MUST ATTEND

SPRING TESTING – PARCC – TBA

Spring Break -Monday, March 28th –Friday, April 1st
(SCHOOL CLOSED) Staff Development- **April 8th**

Friday, April 15th (SCHOOL CLOSED) DC Emancipation Day

Monday, May 2nd - OPEN HOUSE for SY **2016-2017** Enrollment

SCHOOL PORTRAITS

Wednesday, May 18th - Pre-Primary

Wednesday, May 25th - Grades 1-5 – May 27th - Make-up Date -Pre-Primary & 1-5

Monday, May 30th

Memorial Day (SCHOOL CLOSED)

Wednesday, June 15th

PTA/Recital/Report Cards (1:00pm – 3:30 pm) -Elementary School

Thursday, June 16th

"K" Graduation (9:30- 12 noon)

2016 Class Celebration – 4:00 – 6:00

Friday, June 17th

Last Day of School for Students (Six Flags Field Trip)

Friday, June 27th

Last Day for Teachers & Staff Appreciation Day

Monday, June 27th

First Day of Summer School

Friday, August 8th - (Pre-Primary) August 22rd (1-5)

Last Day of Summer School

Saturday, August 6th 9-12

Parent Orientation

Total number of days:

Students: **185 – 3=182**

Teachers : **187**

• Closed 3 Days: **Snow**

SY 2015-16 Annual Report Campus Data Report

Source	Data Point
PCSB	LEA Name: Roots PCS
PCSB	Campus Name: Roots PCS
PCSB	Grades served: PK3-5
PCSB	Overall Audited Enrollment: 106

Enrollment by grade level according to OSSE's Audited Enrollment Report

Grade	PK3	PK4	KG	1	2	3	4
Student Count	18	15	21	13	13	9	8
Grade	7	8	9	10	11	12	Altern:
Student Count	0	0	0	0	0	0	0

STUDENT DATA POINTS	
Sch ool	Total number of instructional days: 185-3(Snow) = 182 Number of instructional days, not including holidays or professional development days, for the majority of the school.
PCS B	Suspension Rate: 0.0% $\frac{\text{number of students with out of school suspensions and in the school's 2015 audit}}{\text{number of students enrolled as of Oct. 2015 audit}} \times 100$
PCS B	Expulsion Rate: 0.0% $\frac{\text{number of students expelled and in the school's 2015 audit}}{\text{number of students enrolled as of Oct. 2015 audit}} \times 100$
PCS B	Instructional Time Lost to Out-of-School Suspension Rate: 0.0% $\frac{(\text{sum of all suspension days for all students due to out of school suspensions})}{(\text{sum of enrollment days for all students for the SY 2015 – 16 school year})} \times 100$
PCS B	Average Daily Attendance: The SRA requires annual reports to include a school's average daily membership. To meet this requirement, PCSB will provide following verified data points: (1) audited enrollment;

	(2) mid-year withdrawals; and (3) mid-year entries. (No action necessary.)
PCS B	Midyear Withdrawals: Validated in mid-August $\frac{\text{number of students in the Oct. 2015 audit count who are not on the school's roster through May 31, 2016}}{\text{number of students enrolled as of Oct 2015 audit}} \times 100$
PCS B	Midyear Entries: Validated in mid-August $\frac{\text{number of students who enroll after Oct. 2015 audit and remained enrolled through May 31, 2016}}{\text{number of students enrolled as of Oct. 2015 audit}} \times 100$
PCS B	Promotion Rate: 98.1% $\frac{\text{number of students who advanced } \geq 1 \text{ grade level in the LEA based on the grade level in the Oct. 2014 and Oct. 2015 audited enrollment files}}{\text{number of students enrolled as of Oct. 2015 audit}}$
PCS B (SY 14- 15)	College Acceptance Rates: Not applicable $\frac{\text{number of 12 grade students accepted to a full time college or university}}{\text{number of 12 grade students}} \times 100$
PCS B (SY 14- 15)	College Admission Test Scores: Not applicable $\frac{\text{number of current grade 12 students scoring at least 800 in SAT \& 16 or higher in ACT}}{\text{number of grade 12 students}} \times 100$
PCS B (SY 14- 15)	Graduation Rates: Not applicable $\frac{\text{number of students in cohort who graduated by June or August 2015 with a standard diploma}}{\text{number of first time grade 9 students in fall 2011 + transfers in - transfers out - emigrants - students who pass away}} \times 100$
FACULTY AND STAFF DATA POINTS	
Sch ool	Teacher Attrition Rate: 0 ($9:0 \times 100$)
Sch ool	Number of Teachers: 9

ROOTS PUBLIC CHARTERED SCHOOL, INC

FY 2016

Number of teachers	9
---------------------------	----------

Average	46,178
----------------	---------------

Range: Minimum	35,360
-----------------------	---------------

Range: Maximum	58,240
-----------------------	---------------

-

ROOTS PUBLIC CHARTER SCHOOL
15 Kennedy Street Northwest
Washington, DC 20011
(V) 202-882-8073 (F) 202-882-8075
Web Site: www.rootspcs.org

BOARD OF DIRECTORS

SY 2015-2016

1. ♦ **Ms. Gilda Sherrod- Ali, Esquire (Chairperson)**
ali950@aol.com
Length of Service: (13) years
2. ♦ **Mr. Jesse Sharp. (Community)-Treasurer**
sharpsolutions@comcast.net
Length of Service: (2) years
3. ♦ **Janine Nixon (Teacher) (Secretary of Board)**
jnixon@rootspcs.org
Length of Service: (1) year
4. ♦ **Ms. Patricia Mitchell - (Community)**
PMitchell@industrial-bank.com
Length of Service (2) years
5. ♦ **Mr. Cameron Poles-(Parent)**
Cameron.poles@gmail.com
Length of Service (1) years
6. ♦ **Ms. Shelia Evans - (Teacher)**
sevans@rootspcs.org
Length of Service (1)
7. ♦ **Mr. Otto Wilson - (Community)**
wilson@cua.edu
Length of Service (2)



FINANCE

PCSB Statement of Activities (Income Statement)
ROOTS PUBLIC CHARTER SCHOOL
JULY 2015 TO JUNE 30, 2016

	<u>Actual</u>
REVENUE	
01. Per Pupil Charter Payments	1,154,037
01b. At Risk Students	91,477
02. Per Pupil Facilities Allowance	328,020
05. Private Grants and Donations	62,796
06a. Activity Fees	2,491
06b. Summer School	101,674
07a. Other Income -NSLP FOOD PROGRAM	90,669
07b. Other Income -Rental Income	28,463
07d. Other Income -Interest Income	2,165
07e. Other Income -SPED	23,794
07el. Other Income -ELL	-
07g. Other Income	5,798
TOTAL REVENUES	1,891,384
	-
ORDINARY EXPENSE	
<i>Personnel Salaries and Benefits</i>	
08. Principal/Executive Salary	110,018
09a. Teachers Salaries	440,875
10. Teacher Aides/Assistance Salaries	13,540
12. Business/Operations Salaries	322,806
16a. Employee Benefits	77,271
16b1. Payroll Taxes	78,109
16c. Insurance - Workers' Comp	6,112
18. Staff Development Expense	11,680
18a Board Educational Scholarship	-
Subtotal: Personnel Expense	- 1,060,411
<i>Direct Student Expense</i>	
19. Textbooks	2,074
20. Student Supplies and Materials	25,573
21a. Library and Media Center Materials	1,259
21b. Student Other Instructional Eq./Materials	3,523
22. Student Assessment Mat/Programs	8,547
22a. Student Records Mgt Contract	4,725
23a. Contracted Student Services	42,260
23b. Contracted Student Services- SPED	21,062
23c. Contracted Student Services-FOOD PROGRAM	110,530
24a. Miscellaneous Student Expense **	34,391
24b. Miscellaneous Student Expense Uniform	-
24c. Miscellaneous Student Expense -NBCDI	10,420
24d. Summer School Costs -1-5G	71,726
	-
PC Subtotal: Direct Student Expense	336,090

PCSB Statement of Activities (Income Statement)
ROOTS PUBLIC CHARTER SCHOOL
JULY 2015 TO JUNE 30, 2016

<i>Occupancy Expenses</i>	<u>Actual</u>
25. Rent	321,486
25a. Business Building Insurance	2,351
26. Building Maintenance and Repairs	35,262
26a. Building Leasehold Improvement-Dep	15,009
27. Utilities	21,466
28. Janitorial Supplies	1,953
29. Contracted Building Services	-
Subtotal: Occupancy Expenses	397,527
<i>Office Expenses</i>	
30. Office Supplies and Materials	19,635
31. Office Equipment Rental and Maintenance	1,893
32. Telephone/Telecommunications	4,344
33. Legal, Accounting and Payroll Services	34,861
34. Printing and Copying	3,330
35. Postage and Shipping	527
36. Other - AD & Dues & Subscription	6,878
Subtotal: Office Expenses	71,468
<i>General Expenses</i>	
37. Insurance	3,591
38. Transportation	171
39. Food Service	-
40. Administration Fee (to PCSB)	18,889
42. Other General Expense	2,022
43. Unforeseen Expenses	-
Subtotal: General Expenses	24,673
NET TOTAL ORDINARY EXPENSES	1,890,169
	1,215
44b. Depreciation Expense - Computers	11,672
NET 44c. Depreciation Expense - Others	5,532
	(15,989)

School Name

ROOTS PUBLIC CHARTER SCHOOL

FY 2017 BUDGET**Fiscal Year**

2017 (JULY 1, 2016 - JUNE 30, 2017)

**Student Enrollment
Contact****115 STUDENTS**
ROSEANNA N. NWAOGU**Phone #**

202-841-6699

REVENUE	PROJECTED BUDGET	
		ANNUAL
01. Per Pupil Charter Payments		1,264,004
02. Per Pupil Facilities Allowance		359,260
06a. Activity Fees & Donation		2,500
06b. At Risk Student Funding		93,555
07a. Other Income -NSLP		97,115
07b. Other Income -Rental Income		26,000
07d. Other Income -Interest Income		1,500
07e. Other Income - SPED		21,400
07g. Other Income		2,500
TOTAL REVENUES		1,867,834
ORDINARY EXPENSE		
<i>Personnel Salaries and Benefits</i>		
08a. Principal/Executive Salary		104,702
08b. Vice Principal/Executive Salary		104,702
09. Teachers Salaries		440,440
10. Teacher Aides/Assistance Salaries		15,080
12a. Business/Operations Salaries -CFO		104,702
12b. Business/Operations Salaries - DOPC		104,702
16a. Employee Benefits		90,185
16b. Payroll Taxes		80,564
16c. Worker's Comp Insurance		6,500
18. Staff Development Expense		12,900
Di Subtotal: Personnel Expense		959,775
19. Textbooks		6,500
20. Student Supplies and Materials		26,500
21a. Library and Media Center Materials		3,000
21b. Student Other Instructional Eq./Materials		3,500
22. Student Assessment Materials		9,350
22a. Student Records Mgt Contract		5,000
23a. Contracted Student Services		37,375
23b. Contracted Student Services- SPED		21,400
24a. Miscellaneous Student Expense **		27,408
24b. Summer School Costs -aAt Risk student		93,555
24c. Food Program Costs		99,500
Subtotal: Direct Student Expense		333,088

Occupancy Expenses

25. Rent	298,750
25a. Business Building Insurance	3,500
26. Building Maintenance and Repairs	18,000
26b. Building Leasehold Improvement-Dep	18,000
27. Utilities	20,500
28. Janitorial Supplies & services	28,000
29. Contracted Building Services	-
Or Subtotal: Occupancy Expenses	386,750
30. Office Supplies and Materials	-
31. Office Equipment Rental and Maintenance	8,000
32. Telephone/Telecommunications	1,500
33. Legal, Accounting and Payroll Services	3,500
34. Printing and Copying	38,000
35. Postage and Shipping	750
36. Other - AD & Dues & Subscription	1,500
Gr Subtotal: Office Expenses	4,500
	57,750
37. Insurance	-
38. Transportation	5,750
39. Food Service	400
40. Administration Fee (to PCSB)	-
42. Other General Expense	9,100
43. Unforeseen Expenses	2,100
NI Subtotal: General Expenses	-
TOTAL ORDINARY EXPENSES	17,350
NET INCOME	1,955,900
44. Depreciation Expense text books/computers/others	16,000
	16,000
	\$0

School Name

ROOTS PUBLIC CHARTER SCHOOL

Fiscal Year**FY 2017 BUDGET**

2017 (JULY 1, 2016 - JUNE 30, 2017)

**Student Enrollment
Contact****115 STUDENTS**

ROSEANNA N. NWAOGU

Phone #

202-841-6699

Occupancy Expenses

25. Rent	337,065
25a. Business Building Insurance	3,000
26. Building Maintenance and Repairs	1,500
26b. Building Leasehold Improvement-Dep	20,500
27. Utilities	22,100
28. Janitorial Supplies & services	32,600
29. Contracted Building Services	-
OI Subtotal: Occupancy Expenses	416,765
	-
30. Office Supplies and Materials	11,000
31. Office Equipment Rental and Maintenance	2,100
32. Telephone/Telecommunications	5,600
33. Legal, Accounting and Payroll Services	35,500
34. Printing and Copying	3,500
35. Postage and Shipping	1,000
36. Other - AD & Dues & Subscription	7,500
GI Subtotal: Office Expenses	66,200
	-
37. Insurance	6,100
38. Transportation	250
39. Food Service	-
40. Administration Fee (to PCSB)	18,900
42. Other General Expense	-
43. Unforeseen Expenses	47,756
NI Subtotal: General Expenses	73,006
TOTAL ORDINARY EXPENSES	1,848,834
NET INCOME	19,000
44. Depreciation Expense text books/computers/others	19,000
	\$0

PCSB Statement of Financial Position (Balance Sheet)**School Name**

As of JUNE 30, 2016

ROOTS PUBLIC CHARTER SCHOOL, INC

ASSETS**Current Assets**

Checking/Savings	1,105,727
Accounts Receivable	17,783
Other Current Assets	70,104
Total Current Assets	1,193,614

Fixed Assets (Net)

Operating Fixed Assets	58,755
Facilities	-
Total Fixed Assets	58,755

TOTAL ASSETS	1,252,369
---------------------	------------------

LIABILITIES**Current Liabilities**

Short-Term Debt	-
Other Current Liabilities	82,795
Total Current Liabilities	82,795

Long-term liabilities

-

TOTAL LIABILITIES	82,795
--------------------------	---------------

NET ASSETS

Beginning net assets	1,185,563
Net income for the year	(15,989)
TOTAL NET ASSETS	1,169,574

TOTAL LIABILITIES AND NET ASSETS	1,252,369
---	------------------