

Elsie Whitlow Stokes Community Freedom Public Charter School



2015-16 ANNUAL REPORT
3700 Oakview Terrace NE, Washington, DC 20017
202.265.7237
Erica McGrady, Chair, Board of Trustees

TABLE OF CONTENTS

I.	School Description	3-5
	A. Mission Statement	3
	B. School Program	3
II.	School Performance	6-10
	A. Performance and Progress	6
	B. Lessons Learned and Actions Taken	8
	C. Unique Accomplishments	9
	D. List of Donors	10
III.	Data Report	11-13
IV.	Appendices	14-31
	A. 2015-16 Staff Roster	14
	B. 2015-16 Board Roster	17
	C. Unaudited Year-end 2015-16 Financial Statement	18
	D. Approved 2016-17 Budget	26

Mission

Stokes School's mission is as follows:

The Elsie Whitlow Stokes Community Freedom Public Charter School prepares 350 culturally diverse elementary school students in the District of Columbia to be leaders, scholars and responsible citizens who are committed to social justice.

Stokes teaches children to think, speak, read, write and learn in two languages: English and French or English and Spanish. With a dual focus on academic excellence and community service, the Stokes School accomplishes its mission by creating an environment of achievement, respect and non-violence.

School Program

Summary of Curriculum Design and Instructional Approach

The Elsie Whitlow Stokes Community Freedom Public Charter School maintains a nurturing environment where culturally diverse faculty and staff model compassion, fairness, service to others, enthusiasm for learning, and the capacity to contribute to and thrive within a community setting. In our work with students, Stokes School prepares young learners to challenge national and international academic standards, to navigate successfully within their own communities and within the cultures of others, and to function as responsible citizens and leaders.

The Elsie Whitlow Stokes Community Freedom Public Charter School is committed to excellence in all areas. Our rigor, high standards, and inquiry-based curriculum broaden scholars' world-view and develop higher order thinking skills. We implement Investigations Mathematics and Units of Study in Writing in order to tighten the alignment of instruction vertically across the school. Both of these curricula allow for multiple access points to concepts and skills, allowing for student choice, inquiry and maximizing opportunities for student growth. Teachers strive to help all students achieve at their highest capacity and develop a passion for learning. Teachers aim to accommodate individual needs and differentiate instruction for all the various learning styles and abilities and to capitalize on students' strengths. A key factor in creating the best learning environment for students is team teaching with small class sizes and a learning specialist assigned to each grade level. Providers of special education and related services most often deliver those services to small groups within classrooms.

Our Curriculum is thematic and unit-based, following the Common Core State Standards in Mathematics and Language Arts, the DC Standards for Social Studies and Physical Education, and we have transitioned to the Next Generation Science Standards. We follow national standards in Art and Music. Scholars learn all content areas in both French and English or Spanish and English. Stokes School is a candidate school for the International Baccalaureate (IB) Primary Years Programme (PYP). We are integrating IB into the school curriculum through the planning and teaching of transdisciplinary units of inquiry around global themes. IB schools exist across the globe. Like Stokes, IB schools are places for knowledgeable scholars who care about the world in which they live and who want to learn more about the world's people.

In Pre-K, we currently follow the Creative Curriculum which emphasizes developmentally appropriate learning through play for our youngest scholars. In K through 5th grade. We currently use an approach of

Balanced Literacy to teach the Common Core State Standards (CCSS) for Language Arts, including Writer's Workshop in all languages and Words their Way for word study. Our K-5 mathematics curriculum is called Investigations, where students develop deep conceptual understanding of the CCSS and engage in the CCSS Mathematical Practices. We continue to draw upon the Next Generation Science Standards (NGSS) and the DC Standards of Teaching and Learning for Social Studies for K-5th grade.

Topics are explored in depth through trimester themes so that students find meaning from their own experiences. Instruction and learning occurs via multiple modalities using mini-lessons, guided reading, small group projects, cooperative learning, choice boards, and learning centers, sometimes involving technology. Interdisciplinary learning is most often achieved through hands-on projects where students work with manipulative materials, apply skills to problem solving, and learn to communicate the results of their efforts in a variety of formats. Pre-K-5th grade curriculum mapping creates a natural progression of skills that build upon one another over the years. Each thematic unit is celebrated with showcases to share learning with families and the community.

Stokes School's dual language immersion program prepares students to speak, read, write, and think in two languages: English and French, or English and Spanish. Literacy instruction and content instruction are delivered in both languages. Pre-kindergarten students spend 90 percent of their instructional time learning in French or Spanish, while kindergarten through fifth grade students spend half of their instructional time in one of the target languages. All lessons have both content and language objectives. Scholars at Stokes develop a balanced bilingual ability and are able demonstrate their abilities before graduation on study tours to Martinique and Panama.

Family Engagement

Parent Involvement Efforts

Stokes School recognizes parents as the most important advocates for their children. We provide monthly family information sessions or "Open Classroom" sessions where parents can learn about and see the implementation of curricular programs such as, "Investigations Math" and "Units of Study for Teaching Writing" or learn about our assessments, for example. Stokes School aims to empower parents with information to support their children.

Throughout the year, Stokes School specifically aims to involve our parents within all aspects of our learning community. During our First Day Celebration, parents are invited to participate in our back-to-school parade and we then have a Q&A session for them with the Stokes School's administrators concerning the upcoming school year. Back-to-School Night allows parents to see what it is like to spend a day in their children's shoes, as they visit classrooms, sit at their children's desks, and meet their teachers. At the end of each trimester, parents are invited to attend grade level showcases, which are learning showcases led by students. Each trimester, parents also meet with their children's teachers for one-on-one conferences or whole class meetings concerning each student's progress over the past trimester and goals for the next. Since 2012, in collaboration with the Flamboyan Foundation, Stokes School has instituted home visits by teachers at the start of the school year in which parents and teachers discuss expectations, develop a strong relationship and review parent-led goals for their children for the year.

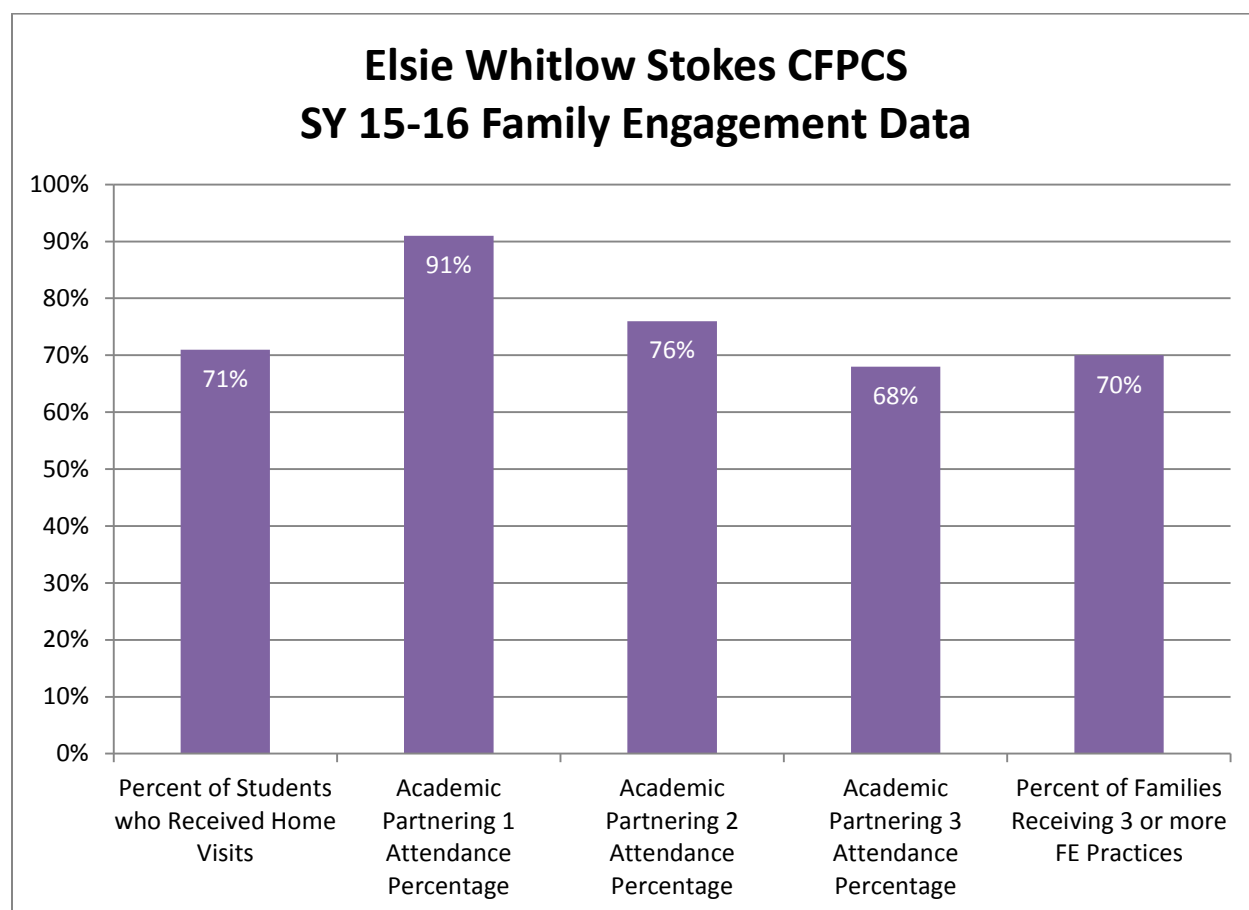
Parents as Leaders

Parents play significant roles within the Stokes School community at every level, as volunteers, teachers, administrators, and board members. At Stokes School, we value parents as leaders and seek to involve parents in shaping the direction of our school improvement efforts. In 2013, parents elected to establish a Parent Teacher Association (PTA). Throughout the school year the PTA meets monthly to discuss how they can better support the school through fund-raisers and community-building events and to provide leadership and support for many of the school's activities and initiatives. We have a Room Parent Coordinator who keeps the classroom Room Parents informed and engaged not only in the classroom but throughout the school building. Each month a different grade level sponsors First Fridays, which is a continental breakfast coordinated by the Room Parents for teachers, parents and staff to gather and chat informally before the beginning of the school day. In addition, our parents are asked to participate on school committees such as the school wellness committee and the ELL parent group.

Parent Support

Stokes School seeks to support parents and families within our community in a variety of ways. All Stokes School parents have access to the Parent Resource Corner, which provides computer access and resources on everything from supporting your child's education to job hunting.

Parent Involvement Data



School Performance

Performance and Progress

Mission

Stokes School's mission is as follows:

The Elsie Whitlow Stokes Community Freedom Public Charter School prepares 350 culturally diverse elementary school students in the District of Columbia to be leaders, scholars and responsible citizens who are committed to social justice.

Stokes teaches children to think, speak, read, write and learn in two languages: English and French or English and Spanish. With a dual focus on academic excellence and community service, the Stokes School accomplishes its mission by creating an environment of achievement, respect and non-violence.

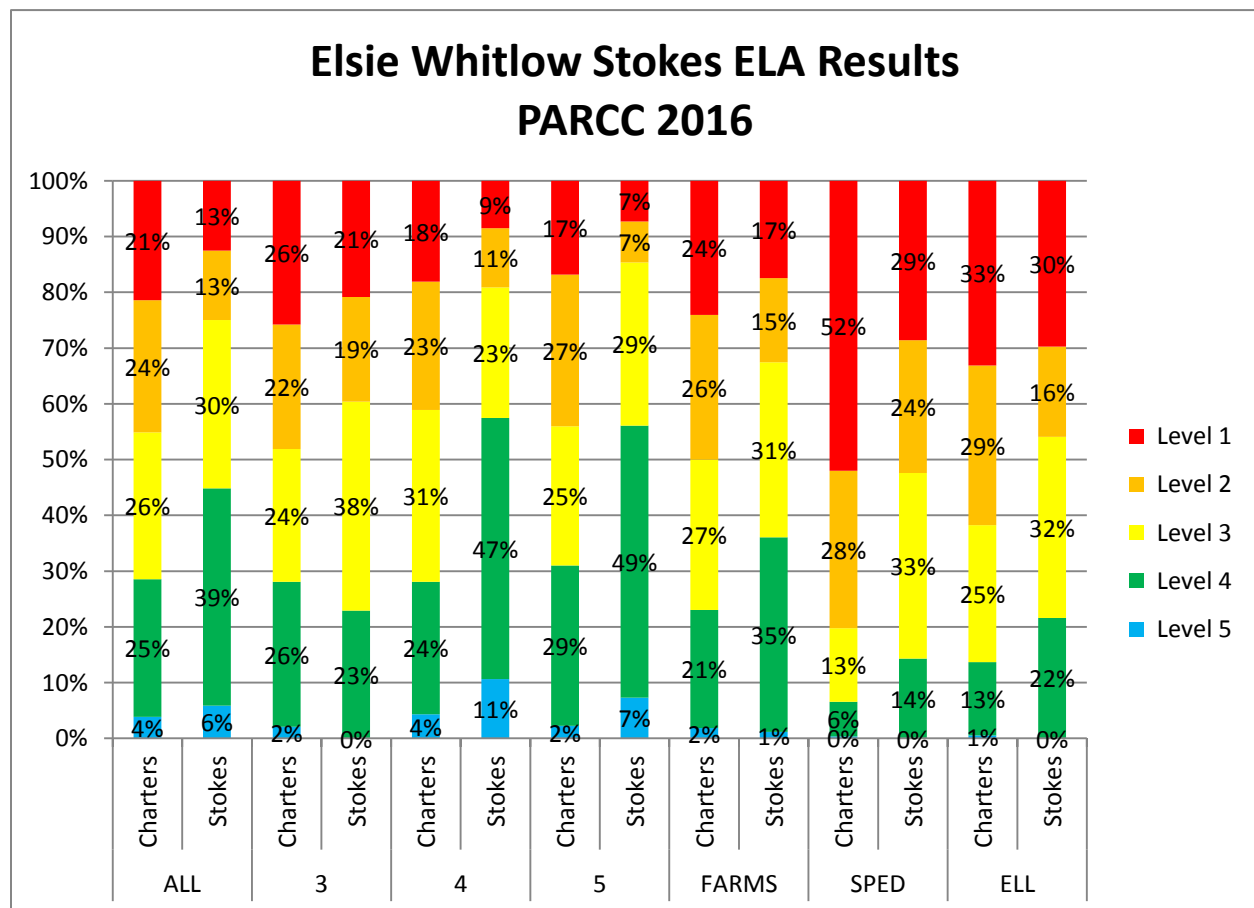
We strive to embody our mission throughout all of our school initiatives both within and outside of the classroom. Our mission guides our school-wide initiatives, school events, family engagement efforts, and improvement plans. The following programs and methodologies show evidence of our constant effort to embody our mission:

- Community Service Learning: In order to develop “leaders, scholars and responsible citizens who are committed to social justice,” we embed community service learning within trimester projects. Scholars think about how the topic they are learning about matters and what they can do about it within their community (local or global).
- Project/Inquiry-based instruction: Our method of instruction, which we are continually striving to enhance, is based on student inquiry around a central idea. For example, students learn mathematics through inquiry around problems, games and activities to develop conceptual understanding of a key mathematical concept.
- Student Leadership opportunities: Stokes scholars are invited to take leadership roles within the school such as on our Student Government and they are asked to represent our school in the outside community in multiple ways such as through our school choir, school musical, or Steel Drum Band.
- Bullying Prevention Program: Our School Psychologist supports classroom teachers with bullying prevention programming within the classroom in order to support students in developing empathy and caring for others.

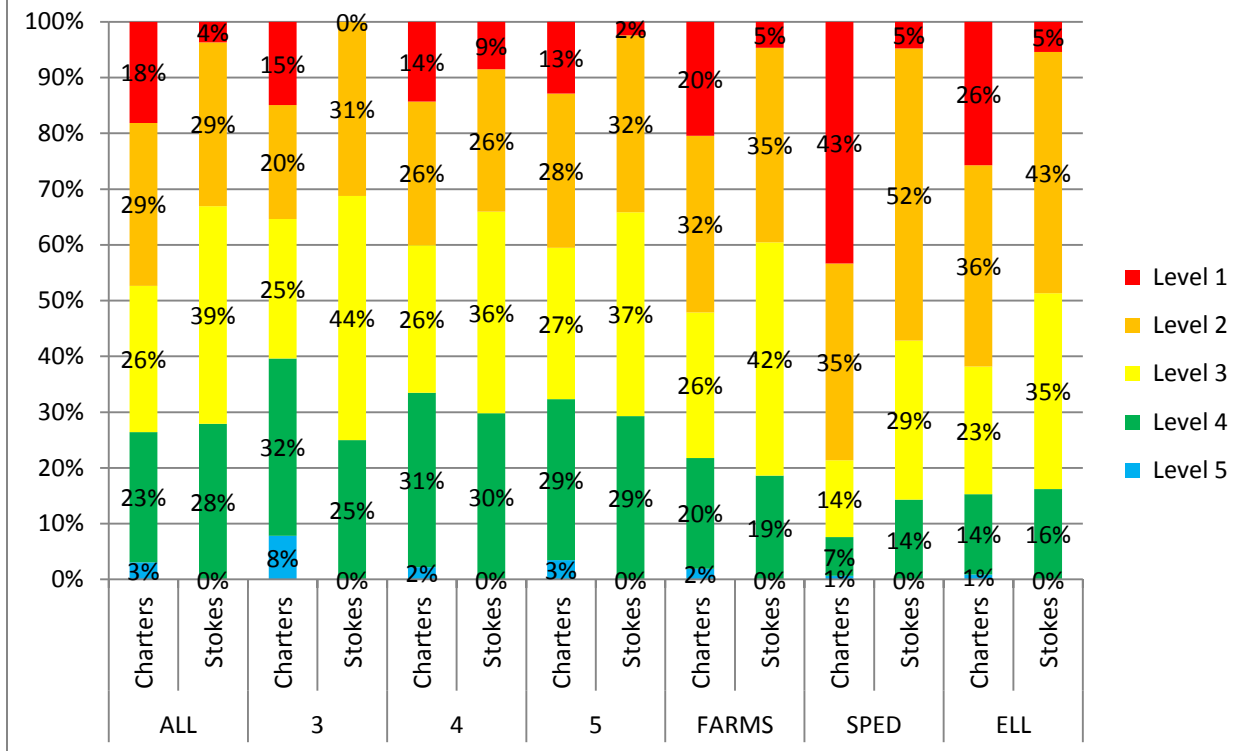
- Diversity of staff/families & international focus of instruction: Our faculty and staff represent a diversity of backgrounds in terms of language, ethnicity, culture and country of origin. This allows us to foster respect and appreciation for others within our scholars. In addition, this allows us to integrate an international focus within the classroom and for school wide celebrations, such as Hispanic Heritage and Francophonie Month.
- Dual-Language Immersion Program Development: Our hallmark is our Dual Language Immersion Program. Our scholars learn another language (French, Spanish or English) through the content that is being taught in the classroom. We approach literacy learning in both languages through a balanced approach in which children learn to read, write, speak and think by writing about what matters to them, reading texts that interest them and are on their level, and integrating discussion in all lessons.

Goals and Academic Achievement Expectations

Stokes School has adopted the PMF as its charter goals and PCSB will report on its progress in the published PMF report. Below, see Stokes' performance on PARCC relative to the charter network.



Elsie Whitlow Stokes Math Results PARCC 2016



Lessons Learned and Actions Taken

As a result of our review and analysis of the above data and data from the previous school year, Stokes School focused or will focus on the following programs, areas and activities to enhance the academic program and drive student improvement:

- Expansion of the Flamboyant Foundation family engagement model to include more on-going communication with families focused on celebrating growth and focused outreach for particular families.
- Implementation of enhanced instructional supports for English Language Learners and increased efforts to engage low-performing ELL students in out-of-school time intervention and enrichment education activities.
- We have aligned our French and Spanish reading assessment levels to our English reading assessment levels (Fountas & Pinnell) in order to better align our ability to measure growth and adjust instruction accordingly, in both languages. Finally, we have begun to administer a more comprehensive assessment to measure target language development (STAMP). STAMP will allow us to measure growth and is aligned to national ACTFL language learning standards, and will provide a more multi-faceted view of student's language skills.
- In order to strengthen our science program, we have invested in developing a teacher leader for science, partnered with the Center for Inspired Teaching. This includes our teacher

attending a summer institute, professional development, and ongoing mentorship for our teacher leader.

- Stokes School is introducing the International Baccalaureate (IB) Primary Years Programme (PYP) into the school curriculum. Like Stokes, IB schools are places for knowledgeable scholars who care about the world in which they live and who want to learn more about the world's people. We have successfully completed the candidacy application and are as such, a PYP candidate school. We have started the process of providing professional development to staff and aligning our curriculum to IB/PYP standards.
- Due to the very successful adoption of our Writer's Workshop program aligned to the CCSS, we are now piloting the CCSS aligned Reader's Workshop Units of Study out of Teacher's College in order to increase the rigor of and align our reading program. We are using Reader's Workshop in all of our English Language Arts classes and will continue to expand the use in our Spanish classes. We continue to build our French classroom libraries in order to expand the use of Reader's Workshop in French.
- Our re-enrollment rate increased from 91% for SY14-15 to 97.4% this past year, providing evidence that Stokes families are very satisfied with the school and likely because of our participation in DCI (DC International School), which provides a high-quality feeder middle school option for our families and ensured the continuation of language development for our scholar's families.

Unique Accomplishments

1. Stokes scholar's work featured in the Young Playwrights Theater
2. Stokes scholars met with diplomats and heads of state
3. Stokes Steel Drummers played for the National Cherry Blossom Festival
4. Stokes School attained IB Candidacy
5. Stokes School expanded teacher pipelines through Howard University, Catholic University, Center for Inspired Teaching Residency Program, French Teaching Assistant Program (French Embassy) and the Bilingual Teacher Exchange Program (BTEP)
6. Stokes School increased and improved professional development opportunities through partnerships with the Flamboyant Foundation, Joe's Champs, DC Project Zero and the International Baccalaureate Organization.
7. Stokes School launched a green building renovation project that, when completed, will result in capitol improvements and infrastructure upgrades to mechanical equipment, energy and water conservation measures and the installation of solar panels on the school's roof.

List of Grants and Donations above \$500

Contributors & Donors	Amount
US Department of Education	326,234.81
US Dept of Agriculture	197,174.57
DC Government	116,111.43
Medicaid	51,838.09
E-Rate	33,181.60
Fight for Children Teacher Resident Payment	30,000.00
Flamboyan Foundation	20,125.00
Lowes	5,000.00
Stokes PTA Contribution	5,000.00
RAFFA Bronze sponsorship	2,500.00
Ritz Carlton	2,500.00
Razoo Foundation	2,448.17
GE United Way Campaign	1,562.88
UWNCA	2,527.80
Sterling & Lucelia Jones	1,000.00
Tracey Friedlander	1,000.00
UWNCA	831.62
Lauren Winter	800.00
Gates foundation matching gifts	750.00
Jenice View	600.00
Edison Electric Institute donation	520.00
Anonymous	500.00
Carrie Brandt	500.00
Catherine Varley	500.00
Erica McGrady	500.00
Exxon Mobile /Brookland Service Station	500.00
Linda Moore	500.00
Michele Vaughn	500.00
Steel Plate	500.00

SY 2015-16 Annual Report Campus Data Report

Source	Data Point
PCSB	LEA Name: Elsie Whitlow Stokes Community Freedom PCS
PCSB	Campus Name: Elsie Whitlow Stokes Community Freedom PCS
PCSB	Grades served: PK3-5
PCSB	Overall Audited Enrollment: 350

Enrollment by grade level according to OSSE's Audited Enrollment Report

Grade	PK3	PK4	KG	1	2	3	4	5	6
Student Count	37	38	42	48	48	48	47	42	0
Grade	7	8	9	10	11	12	Alternative	Adult	SPED*
Student Count	0	0	0	0	0	0	0	0	0

*Note: This field is only filled in for St. Coletta Special Education PCS as it is the only charter LEA that exclusively serves students with disabilities.

STUDENT DATA POINTS	
School	Total number of instructional days: K-5: 180 PK3-PK4: 179 Number of instructional days, not including holidays or professional development days, for the majority of the school. If your school has certain grades with different calendars, please note it.
PCSB	Suspension Rate: 0.0% $\frac{\text{number of students with out of school suspensions and in the school's 2015 audit}}{\text{number of students enrolled as of Oct. 2015 audit}} \times 100$
PCSB	Expulsion Rate: 0.0% $\frac{\text{number of students expelled and in the school's 2015 audit}}{\text{number of students enrolled as of Oct. 2015 audit}} \times 100$
PCSB	Instructional Time Lost to Out-of-School Suspension Rate: 0.0% $\frac{(\text{sum of all suspension days for all students due to out of school suspensions})}{(\text{sum of enrollment days for all students for the SY 2015 – 16 school year})} \times 100$
PCSB	Average Daily Attendance: The SRA requires annual reports to include a school's average daily membership. To meet this requirement, PCSB will provide following verified data points: (1) audited enrollment;

	(2) mid-year withdrawals; and (3) mid-year entries. (No action necessary.)
PCSB	Midyear Withdrawals: validated after Annual Report submission date $\frac{\text{number of students in the Oct. 2015 audit count who are not on the school's roster through May 31, 2016}}{\text{number of students enrolled as of Oct 2015 audit}} \times 100$
PCSB	Midyear Entries: validated after Annual Report submission date $\frac{\text{number of students who enroll after Oct. 2015 audit and remained enrolled through May 31, 2016}}{\text{number of students enrolled as of Oct. 2015 audit}} \times 100$
PCSB	Promotion Rate: 97.6% $\frac{\text{number of students who advanced } \geq 1 \text{ grade level in the LEA based on the grade level in the Oct. 2014 and Oct. 2015 audited enrollment files}}{\text{number of students enrolled as of Oct. 2015 audit}}$
PCSB (SY1 4- 15)	College Acceptance Rates: <i>Not applicable</i> $\frac{\text{number of 12 grade students accepted to a full time college or university}}{\text{number of 12 grade students}} \times 100$
PCSB (SY1 4- 15)	College Admission Test Scores: <i>Not applicable</i> $\frac{\text{number of current grade 12 students scoring at least 800 in SAT \& 16 or higher in ACT}}{\text{number of grade 12 students}} \times 100$
PCSB (SY1 4- 15)	Graduation Rates: <i>Not applicable</i> $\frac{\text{number of students in cohort who graduated by June or August 2015 with a standard diploma}}{\text{number of first time grade 9 students in fall 2011 + transfers in - transfers out - emigrants - students who pass away}} \times 100$
FACULTY AND STAFF DATA POINTS	
School	Teacher Attrition Rate: 21% $\frac{\text{number of teachers retired/resigned/outplaced between October 5, 2015 and first day of school in 2016}}{\text{(number of teachers employed as of October 5, 2015)}} \times 100$

Sch ool	Number of Teachers: 33 "Teacher" is defined as any adult responsible for the instruction of students at least 50% of the time, including, but not limited to, lead teachers, teacher residents, special education teachers, and teacher fellows.
Sch ool	Teacher Salary 1. Average: \$ 54,358 2. Range -- Minimum: \$ 36,050 Maximum: \$ 85,500

EWS Faculty and Staff 2015-2016			
First Name	Last Name	Job Title	Qualifications
Abby	Sondak	Communications and Development Manager	B.A. American Studies
Achille	Ango	Kindergarten French Teacher	B.A. French Literature
Ana	Bolanos	Pre-K Teacher Assistant	B.A. Biology
Ana Maria	Donado	2nd Grade Spanish Teacher	M.S. Nutritional Engineering
Angelica	Carter	2nd Grade English Teacher	B.A. Elementary Education
Annyck	Ango	4th Grade French Teacher	B.A. Education
Benjamin	Frey	4th Grade English Teacher	M.A. Curriculum and Instruction
Bill	Moczydlowski	Business Manager	M.B.A Accounting
Bobby	Caballero	Director of Student Support	B.S. Human Development
Carina	Caballero	1st Grade Spanish Teacher	M.A. Special Education
Caroline	Blackman	Assistant Art Teacher	A.A. Fine Art
Christopher	Headecker	Chef Manager	B.S. Criminal Science
Claudia	Moncayo	3rd Grade Spanish Teacher	B.A. Education
Constanza	Rosas	4th Grade Spanish Teacher	B.A. Architecture
Daughn	McNeil	ELL Support	M.A. Elementary Education
David	Bravo	ELL Coordinator	B.A. English as a Second Language
Diandra	Dalson	Coordinator of Specialized Supports	M.A. Special Education
Elizabeth	Heller	2nd Grade English Teacher	M.A. Early Childhood Special Education

Erika	Bryant	Executive Director	M.Ed. Education Administration
Everett	Richardson	Learning Specialist	M.A. Education Administration
Francis	Richards	Music Teacher	B.A. Music
Fresia	Cortes	Administrative Services Manager	A.A. Bilingual Secretarial Administration
Georgette	Blay	2nd Grade French Teacher	M.A. Teaching
Griselda	Vasquez	Pre-K Spanish Teacher	B.S. Political Science
Hope	Cornish	1st Grade English Teacher	B.A. Human Development
Ilcia	Moran Ramos	Pre-K Spanish Teacher	B.A. Psychology
Javier	Valera	5th Grade Spanish Teacher	B.A. Elementary Education
Jennifer	Sloop	Learning Specialist	B.A. Early Childhood Education
Jonah	Davenport	Pre-K Coordinator	M.A. Early Childhood Special Education
Joan	Flannery	Art Teacher	B.A. Art
Julia	Senerchia	Director of Data and Accountability	M.Ed. Elementary Education
Kady	Keita	Pre-K Teacher Assistant	B.A. Business Admin
Karim	Ewing-Boyd	IB and Garden Coordinator	B.A. Philosophy
Kathy	Ticon	Kindergarten English Teacher	B.A. Psychology
Kelly	Anderson	5th Grade English Teacher	M.A. International and World History
Kerry	Convery	3rd Grade English Teacher	B.A. Elementary Education
Kimberly	Williams	Food Service Coordinator	M.S. Business Administration
Kristin	Long	French Immersion Assistant and Library Specialist	B.A. French

Lauren	Cagney	1st Grade English Teacher	B.A. Early Childhood Education
Liliane	Duchene	Pre-K French Teacher	B.A. French/Spanish
Linda	Moore	Founder & Senior Advisor	M.S. Counseling Psychology
Lisa	Volpe	Library Specialist and ELL Support	M.A. Spanish Studies
Marcia	Lue-Chung Herbert	Kindergarten Spanish Teacher	M.A. Education
Maribel	Wan	Literacy Coach	M.A. Teaching
Maura	Varley Gutiérrez	Director of Teaching & Learning	Ph.D. Language, Reading and Culture
Melida	Ortega	Pre-K Teacher Assistant	B.S. Education
Monica	Dixon-Hagos	Kindergarten English Teacher	B.A. Early Childhood Education
Omar	Saibou	Pre-K French Teacher	B.A. Computer Information Systems
René	Hayden	3rd Grade French Teacher	Ph.D. History
Sarah	Hausman	1st Grade French Teacher	M.A. Special Education
Sheila	Scott-Bates	Learning Specialist	B.A. Education
Theresa	Carter	2nd Grade English Teacher	M.A. Spanish
Tracey	Alexander	Instructional Assistant	B.A. Special Education (in progress)
Vincent	Vigneron	5th Grade French Teacher	M.S. Education
Vony	Rakotomaniraka	Pre-K French Teacher	M.A. Communications
Willa	Jones	School Psychologist	Ph.D. Clinical Psychology

EWS Board of Trustees 2015-2016				
	Name	Role	Term of Service	DC Resident
1	Niya Avery	Alumna Representative	Non-voting	Yes
2	Carlos Bonner	Finance Committee	11/12—17/18	Yes
3	John R. Bryant	Finance Committee	98/99 -16/17	No
4	Robert Disney	Parent Representative & Development Committee	15/16 – 21/22	Yes
5	Tracey Friedlander	Governance Committee	09/10-15/16 15/16 – 21/22	Yes
6	Khalil Gedin	Alumnus Representative	Non-voting	No
7	Erin Gore	Parent Representative & Development Committee Chair	14/15-20/21	Yes
8	Verleria King-Jones	Treasurer & Finance Committee Chair	10/11-16/17	No
9	Hoyt King	Finance Committee	15/16-21/22	Yes
10	Robyn Lingo	Academic Excellence Committee	14/15-20/21	Yes
11	Erica McGrady	Board Chair	10/11-16/17	Yes
12	Rodney Rice	Academic Excellence Committee	15/16-21/22	No
13	Ami Richardson	Governance Committee	14/15 – 20/21	No
14	Yves Samake	Development Committee	15/16-21/22	No
15	Jenice View, Ph.D.	Academic Committee Chair	13/14-19/20	Yes

Unaudited Year-end 15-16 Financial Statement

	<u>Jun 30, 16</u>	<u>Jun 30, 15</u>
ASSETS		
Current Assets		
Checking/Savings		
1010 • BB&T- Checking Stokes Kitchen	9,184.62	18,805.82
1009 • BBT Checking XXX3956 - Food Svs	60,990.59	21,420.83
1002 • BBT xxx5624		
1002.1 • Operating Cash	<u>1,532,498.34</u>	<u>1,665,952.21</u>
Total 1002 • BBT xxx5624	<u>1,532,498.34</u>	<u>1,665,952.21</u>
1003 • BBT xxx8429	8,917.25	8,577.83
1008 • United Bank	<u>13,850.02</u>	<u>13,843.09</u>
Total Checking/Savings	<u>1,625,440.82</u>	<u>1,728,599.78</u>
Accounts Receivable		
1100 • Accounts Receivable	140,574.81	158,009.95
1110 • Contributions/Grants Receivable	214,737.49	85,111.24
1120 • Aftercare, Receivables	<u>8,540.00</u>	<u>6,276.00</u>
Total Accounts Receivable	<u>363,852.30</u>	<u>249,397.19</u>
Other Current Assets		
1155 • Pay Payl CC Payment Deposits	2,205.09	19,416.98
1190 • Short Term Receivables	0.00	2,533.00
1255 • Other receivable	<u>7,739.70</u>	<u>0.00</u>
Total Other Current Assets	<u>9,944.79</u>	<u>21,949.98</u>
Total Current Assets	<u>1,999,237.91</u>	<u>1,999,946.95</u>
Fixed Assets		
1491 • Amortized Loan Fees	-55,320.48	-39,129.12
1490 • Capitalized Loan Fees	113,339.31	113,339.31
1455 • Accum Dep - Capital Leases	-50,490.95	-41,213.39
1450 • Capital Leases	54,356.61	54,356.61
1300 • Furniture and Equipment	44,071.41	44,071.41
1305 • Acc Dep F and E	-43,811.47	-42,251.90
1320 • Computers and Tech	63,071.78	15,194.78
1325 • Acc Dep Computers and Tech	-19,982.48	-15,194.78
1330 • Improvements	78,323.38	58,718.38

1335 · Acc Dep Improvements	-12,740.26	-5,947.42
1340 · Vehicle	9,002.50	9,002.50
1345 · Accumulated Dep Vehicle	-9,002.50	-9,002.50
1350 · Building	10,735,986.55	10,735,986.55
1355 · Acc Depr Building	-2,153,506.44	-1,877,512.27
1400 · Donated Assets	32,500.00	32,500.00
1405 · Acc Dep DOnated Assets	<u>-32,500.00</u>	<u>-27,500.00</u>
Total Fixed Assets	8,753,296.96	9,005,418.16
Other Assets		
1256 · Deferred Compensation	128,640.53	74,653.45
1200 · Prepaid Expenses	0.00	25,601.73
1225 · Security Deposits	7,101.52	7,101.52
1250 · Employee Advances	<u>6,839.36</u>	<u>737.34</u>
Total Other Assets	<u>142,581.41</u>	<u>108,094.04</u>
TOTAL ASSETS	<u>10,895,116.28</u>	<u>11,113,459.15</u>
LIABILITIES & EQUITY		
Liabilities		
Current Liabilities		
Accounts Payable		
2000 · AP	<u>107,533.47</u>	<u>102,625.83</u>
Total Accounts Payable	107,533.47	102,625.83
Credit Cards		
2011 · BB&T xxx5658 (used to be 2155)	<u>7,162.89</u>	<u>7,681.42</u>
Total Credit Cards	7,162.89	7,681.42
Other Current Liabilities		
2120 · Metro Smart Benefits	201.70	0.00
2166 · PTA	410.50	0.00
2140 · Deferred Compensation Liability	127,844.00	76,484.00
2110 · TIAA CREF Voluntary	18,318.50	25,962.59
2160 · Accrued Leave	35,522.71	33,222.02
2200 · Deferred Revenue	61,081.00	45,503.00
2400 · Sunshine Fund	5,443.90	6,551.98
2410 · Payroll Liabilities	19,415.61	19,148.64
2420 · Employee Payroll Payables	<u>258,890.90</u>	<u>257,029.94</u>
Total Other Current Liabilities	<u>527,128.82</u>	<u>463,902.17</u>

Total Current Liabilities	641,825.18	574,209.42
Long Term Liabilities		
2800 · Interest Rate Swap Liability	193,696.00	193,696.00
2700 · Long-Term Lease Liability	2,577.07	8,018.09
2300 · Notes Payable		
2307 · BB&T Second Loan	94,134.77	251,509.23
2306 · BB&T First Loan	6,304,793.45	6,478,060.60
Total 2300 · Notes Payable	<u>6,398,928.22</u>	<u>6,729,569.83</u>
Total Long Term Liabilities	<u>6,595,201.29</u>	<u>6,931,283.92</u>
Total Liabilities	7,237,026.47	7,505,493.34
Equity		
3000 · Net Assets	1,224,706.32	1,224,706.32
3200 · Unrestricted Net Assets	2,383,259.49	1,410,058.00
Net Income	<u>50,124.00</u>	<u>973,201.49</u>
Total Equity	<u>3,658,089.81</u>	<u>3,607,965.81</u>
TOTAL LIABILITIES & EQUITY	<u>10,895,116.28</u>	<u>11,113,459.15</u>

	<u>Jul '15 - Jun 16</u>	<u>Jul '14 - Jun 15</u>	<u>\$ Change</u>	<u>% Change</u>
Income				
4000 · Public Funds				
4099 · Per Pupil Payments				
4100 · Per Pupil Charter Payments	4,430,907.00	4,840,113.00	-409,206.00	-8.45%
4099 · Per Pupil Payments - Other	<u>1,105,168.00</u>	<u>1,543,754.00</u>	<u>-438,586.00</u>	<u>-28.41%</u>
Total 4099 · Per Pupil Payments	5,536,075.00	6,383,867.00	-847,792.00	-13.28%
4120 · Federal Entitlements (NCLB)				
4135 · SWP Title I Pt A	175,626.73	207,780.37	-32,153.64	-15.48%
4136 · SWP Title II	0.00	11,580.59	-11,580.59	-100.0%
4121 · Title I Funds	0.00	-1,709.26	1,709.26	100.0%
4125 · Title III	7,190.64	47.81	7,142.83	14,940.03%
4129 · IDEA, Part B	<u>46,275.70</u>	<u>53,346.60</u>	<u>-7,070.90</u>	<u>-13.26%</u>
Total 4120 · Federal Entitlements (NCLB)	<u>229,093.07</u>	<u>271,046.11</u>	<u>-41,953.04</u>	<u>-15.48%</u>
Total 4000 · Public Funds	5,765,168.07	6,654,913.11	-889,745.04	-13.37%

4130 · Other Government Funds				
4164 · PE Grant	74,072.62	0.00	74,072.62	100.0%
4171 · DC Pay Grant	0.00	10,000.00	-10,000.00	-100.0%
4163 · Improving Academic Quality	23,318.90	117,566.91	-94,248.01	-80.17%
4159 · Schools Technology Fund	34,103.81	0.00	34,103.81	100.0%
4158 · SOAR-Replication Grant	73,822.84	72,732.94	1,089.90	1.5%
4156 · Soar- Special Pops (ELL)	0.00	36,482.84	-36,482.84	-100.0%
4155 · Special Population Grant	0.00	5,231.79	-5,231.79	-100.0%
4152 · 21st Century	0.00	8,140.67	-8,140.67	-100.0%
4149 · Race to the Top	0.00	25,774.49	-25,774.49	-100.0%
4147 · E-Rate	33,181.60	0.00	33,181.60	100.0%
4700 · Medicaid	51,838.09	10,067.22	41,770.87	414.92%
4130 · Other Government Funds - Other	<u>7,935.00</u>	<u>0.00</u>	<u>7,935.00</u>	<u>100.0%</u>
Total 4130 · Other Government Funds	298,272.86	285,996.86	12,276.00	4.29%
4290 · Private Grants and Donations				
4250 · Contributions Corporate	14,270.00	16,994.00	-2,724.00	-16.03%
4200 · Contributions Individuals	32,884.01	15,833.40	17,050.61	107.69%
4290 · Private Grants and Donations - Other	<u>47,625.00</u>	<u>10,271.48</u>	<u>37,353.52</u>	<u>363.66%</u>
Total 4290 · Private Grants and Donations	94,779.01	43,098.88	51,680.13	119.91%
4360 · In-Kind Contributions				
4400 · Program Fees	53,958.00	10,712.16	43,245.84	403.71%
4600 · Activities Fees (student)	63,295.66	44,189.90	19,105.76	43.24%
4610 · Aftercare Income	264,233.50	270,109.20	-5,875.70	-2.18%
4800 · Other Income				
4802 · Stokes Kitchen Inc				
4703 · Yu Ying DoD Entitlement	-6,701.88	-17,250.70	10,548.82	61.15%
4702 · Shining Stars DOD Entitlement	-2,829.67	-2,362.22	-467.45	-19.79%
4701 · Lamb DOD Entitlement	-5,601.67	-14,286.75	8,685.08	60.79%
4802 · Stokes Kitchen Inc - Other	<u>531,139.91</u>	<u>558,513.66</u>	<u>-27,373.75</u>	<u>-4.9%</u>
Total 4802 · Stokes Kitchen Inc	516,006.69	524,613.99	-8,607.30	-1.64%
4850 · Building Rental				
4910 · Interest Income	2,876.28	2,372.64	503.64	21.23%
4500 · Special Events/Fundraising	35,862.58	11,391.01	24,471.57	214.83%
4800 · Other Income - Other	<u>9,494.73</u>	<u>5,025.53</u>	<u>4,469.20</u>	<u>88.93%</u>
Total 4800 · Other Income	590,590.28	572,853.17	17,737.11	3.1%
4920 · Unrealized Gains (Losses)	2,966.50	-1,957.42	4,923.92	251.55%
4940 · Breakfast/Lunch Fees				

4162 • CACFP-Child & Adult Care Food P	33,338.42	75,686.01	-42,347.59	-55.95%
4161 • Fresh Fruit & Veggies (USDA)	29,463.41	18,020.09	11,443.32	63.5%
4160 • NSL	134,372.74	182,235.69	-47,862.95	-26.26%
4940 • Breakfast/Lunch Fees - Other	53,568.36	50,126.25	3,442.11	6.87%
Total 4940 • Breakfast/Lunch Fees	250,742.93	326,068.04	-75,325.11	-23.1%
Total Income	7,384,006.81	8,206,017.08	-822,010.27	-10.02%
Gross Profit	7,384,006.81	8,206,017.08	-822,010.27	-10.02%
Expense				
5000 • 1-PERSONNEL SALARIES & BENEFITS				
5003 • Administrative Salaries	609,432.65	589,771.09	19,661.56	3.33%
5004 • Instructional Salaries				
5009 • Substitute Teachers	19,737.00	0.00	19,737.00	100.0%
5004 • Instructional Salaries - Other	2,540,994.93	2,562,848.07	-21,853.14	-0.85%
Total 5004 • Instructional Salaries	2,560,731.93	2,562,848.07	-2,116.14	-0.08%
5011 • Development Salaries	0.00	30,832.38	-30,832.38	-100.0%
5110 • Other Education Professionals	353,203.55	372,780.34	-19,576.79	-5.25%
5120 • Student Support Salaries				
5002 • Food Service	292,714.59	337,419.78	-44,705.19	-13.25%
5007 • Family Support	7,066.25	68,561.73	-61,495.48	-89.69%
5120 • Student Support Salaries - Other	86,581.56	86,581.56	0.00	0.0%
Total 5120 • Student Support Salaries	386,362.40	492,563.07	-106,200.67	-21.56%
5200 • Employee Benefits				
5205 • Pension Expense	51,360.00	76,484.00	-25,124.00	-32.85%
5201 • Life Insurance	6.34	21,445.53	-21,439.19	-99.97%
5202 • Health Insurance	312,280.91	261,195.01	51,085.90	19.56%
5240 • TIAA CREF	139,754.73	112,502.78	27,251.95	24.22%
5100 • Employer Taxes	307,320.82	322,353.76	-15,032.94	-4.66%
5200 • Employee Benefits - Other	2,300.69	-2,670.55	4,971.24	186.15%
Total 5200 • Employee Benefits	813,023.49	791,310.53	21,712.96	2.74%
5300 • Professional Development	90,133.43	32,025.84	58,107.59	181.44%
Total 5000 • 1-PERSONNEL SALARIES & BENEFITS	4,812,887.45	4,872,131.32	-59,243.87	-1.22%
6000 • 2-DIRECT STUDENT COSTS				
6110 • Saturday Academy Exp.	0.00	8,866.25	-8,866.25	-100.0%
5600 • Student/Instructional Materials	20,594.61	45,175.73	-24,581.12	-54.41%

5700 · Student/Instructional Supplies	52,437.15	77,360.47	-24,923.32	-32.22%
6145 · Library & Media Center Material	2,840.00	0.00	2,840.00	100.0%
6155 · Student Assessment Materials	5,559.50	9,410.64	-3,851.14	-40.92%
6103 · School Activities				
6103.1 · Field trips	8,917.69	25,886.34	-16,968.65	-65.55%
6103.2 · Study Trips	83,029.43	56,978.18	26,051.25	45.72%
6103 · School Activities - Other	1,190.00	250.00	940.00	376.0%
Total 6103 · School Activities	93,137.12	83,114.52	10,022.60	12.06%
6165 · Technology	28,008.00	47,289.70	-19,281.70	-40.77%
5560 · Contracted Professional Svcs				
5560.7 · Other - Educ Prof Services	135,170.00	67,725.88	67,444.12	99.58%
5560.1 · Direct Occupational Therapy Ser	26,635.00	14,674.70	11,960.30	81.5%
5560.2 · Psychological Services	26,983.57	20,937.50	6,046.07	28.88%
5560.4 · Speech & language Services	56,094.18	59,537.24	-3,443.06	-5.78%
5560.5 · Translation Services	0.00	220.00	-220.00	-100.0%
5560 · Contracted Professional Svcs - Other	58,717.34	62,515.01	-3,797.67	-6.08%
Total 5560 · Contracted Professional Svcs	303,600.09	225,610.33	77,989.76	34.57%
6125 · Miscellaneous Student Expense	23,385.57	28,851.58	-5,466.01	-18.95%
7003 · Food Services				
6700 · Food Service	169,100.62	131,393.97	37,706.65	28.7%
7003 · Food Services - Other	1,047.13	0.00	1,047.13	100.0%
Total 7003 · Food Services	170,147.75	131,393.97	38,753.78	29.49%
Total 6000 · 2-DIRECT STUDENT COSTS	699,709.79	657,073.19	42,636.60	6.49%
6400 · 3-OCCUPANCY EXPENSES				
6416 · Loan Fee Expensed	16,191.36	16,191.36	0.00	0.0%
6415 · Mortgage Interest Expense	331,175.04	369,796.20	-38,621.16	-10.44%
6402 · Utilities				
6402.1 · Electric	59,925.36	57,184.79	2,740.57	4.79%
6402.2 · Gas	15,882.57	19,433.16	-3,550.59	-18.27%
6402.3 · Water	20,643.01	15,608.04	5,034.97	32.26%
Total 6402 · Utilities	96,450.94	92,225.99	4,224.95	4.58%
6403 · Contracted Building Svcs				
6413 · Contracted Bldg Svcs - Other	150.00	565.64	-415.64	-73.48%
6602 · Equipment & Furnishings	2,732.97	0.00	2,732.97	100.0%
6600 · Equipment Rental	7,212.96	11,930.52	-4,717.56	-39.54%
6411 · landscaping Services	1,335.00	4,980.00	-3,645.00	-73.19%
6410 · Pest Control	1,560.90	978.60	582.30	59.5%

6409 · Equipment Repairs & Maintenance	9,148.85	9,686.32	-537.47	-5.55%
6408 · Security Services	56,357.77	48,784.36	7,573.41	15.52%
6407 · Cleaning/Janitorial Svcs	104,797.02	118,536.69	-13,739.67	-11.59%
6403 · Contracted Building Svcs - Other	9,990.71	7,875.76	2,114.95	26.85%
Total 6403 · Contracted Building Svcs	193,286.18	203,337.89	-10,051.71	-4.94%
6404 · Building Repairs & Maintenance	39,233.35	37,581.69	1,651.66	4.4%
6412 · Depreciation Exp. - Building	275,994.17	275,994.17	0.00	0.0%
Total 6400 · 3-OCCUPANCY EXPENSES	952,331.04	995,127.30	-42,796.26	-4.3%
6450 · 4-OFFICE EXPENSES				
6550 · Capital Lease Interest Expense	1,031.30	1,939.20	-907.90	-46.82%
6200 · Office Supplies	17,521.62	8,841.55	8,680.07	98.17%
6380 · Office Equip Rental/Maintenance	0.00	262.19	-262.19	-100.0%
5500 · Professional Svc Fees				
6006 · Professional Svs Fees - Other	10,628.00	23,029.06	-12,401.06	-53.85%
5290 · Payroll Service Fees	6,746.53	7,204.30	-457.77	-6.35%
6001 · Legal Fees	2,659.81	8,868.23	-6,208.42	-70.01%
6002 · Accounting & Audit	22,250.00	52,850.00	-30,600.00	-57.9%
6004 · Computers & network Services	49,542.17	33,350.00	16,192.17	48.55%
5500 · Professional Svc Fees - Other	200.00	750.00	-550.00	-73.33%
Total 5500 · Professional Svc Fees	92,026.51	126,051.59	-34,025.08	-26.99%
6201 · Computer & Tech Supplies	12,263.00	9,941.24	2,321.76	23.36%
6301 · Postage and Shipping	614.52	1,144.73	-530.21	-46.32%
6302 · Printing & Copying	74,936.76	54,966.81	19,969.95	36.33%
6406 · Communications/Telephone	56,586.66	20,025.21	36,561.45	182.58%
7100 · Depreciation Expense	27,417.67	21,141.98	6,275.69	29.68%
Total 6450 · 4-OFFICE EXPENSES	282,398.04	244,314.50	38,083.54	15.59%
6510 · 5-GENERAL EXPENSES				
7006 · DCI	55,072.84	49,906.24	5,166.60	10.35%
7005 · Stokes Kitchen Expense	330,395.36	238,235.55	92,159.81	38.68%
6545 · Other General Expense				
9010 · Bad Debt Expense	0.00	0.00	0.00	0.0%
6504 · Other General Expense	0.00	968.00	-968.00	-100.0%
6525 · Fees, Other	80.00	552.93	-472.93	-85.53%
6520 · Donations	1,500.00	0.00	1,500.00	100.0%
9000 · Miscellaneous	687.33	0.00	687.33	100.0%
7002 · Entertainment/Meals	5,929.24	8,330.19	-2,400.95	-28.82%
6809 · Penalties & Late Fees	1,950.00	450.00	1,500.00	333.33%
6500 · Bank/Credit Card Service Fees	17,100.84	11,237.71	5,863.13	52.17%

6545 · Other General Expense - Other	0.00	64.79	-64.79	-100.0%
Total 6545 · Other General Expense	27,247.41	21,603.62	5,643.79	26.12%
6102 · Dues & Subscriptions	15,925.00	8,630.00	7,295.00	84.53%
6003 · Insurance				
6003.1 · Auto	5,281.00	5,147.00	134.00	2.6%
6003.2 · General Liability & Property	25,448.00	24,691.00	757.00	3.07%
6003.3 · Umbrella policy	15,881.00	4,618.00	11,263.00	243.89%
6003.4 · Workman's Comp.	27,465.00	19,810.00	7,655.00	38.64%
6003 · Insurance - Other	290.00	8,377.00	-8,087.00	-96.54%
Total 6003 · Insurance	74,365.00	62,643.00	11,722.00	18.71%
6800 · Transportation				
6502 · Auto Exp-Fuel/Maint/Repairs	5,995.11	7,397.81	-1,402.70	-18.96%
6802 · Travel	445.37	20.13	425.24	2,112.47%
6803 · Parking/Mileage/Taxis	580.44	919.35	-338.91	-36.86%
Total 6800 · Transportation	7,020.92	8,337.29	-1,316.37	-15.79%
9003 · DC PCSB Admin Fee	73,786.46	70,904.85	2,881.61	4.06%
7001 · Marketing/Advertising	2,743.50	3,838.78	-1,095.28	-28.53%
6510 · 5-GENERAL EXPENSES - Other	0.00	69.95	-69.95	-100.0%
Total 6510 · 5-GENERAL EXPENSES	586,556.49	464,169.28	122,387.21	26.37%
Total Expense	7,333,882.81	7,232,815.59	101,067.22	1.4%
Net Income	50,124.00	973,201.49	-923,077.49	-94.85%

Approved 16-17 Budget

	<u>Approved</u>
	<u>Budget 2017/16</u>
Income	
4000 · Public Funds	
4099 · Per Pupil Payments	
4100 · Per Pupil Charter Payments	4,556,995
4101 · Per Pupil Facilities Allowance	1,093,400
Total 4099 · Per Pupil Payments	5,650,395
4120 · Federal Entitlements (NCLB)	
4135 · SWP Title I Pt A	150,000
4136 · SWP Title II	
4137 · SWP Title III	
4138 · SWP Title IV	
4128 · School Improvement Funds 1003a	
4121 · Title I Funds	
4123 · Title II, Part A	
4125 · Title III	
4126 · Title IV	
4129 · IDEA, Part B	52,000
4120 · Federal Entitlements (NCLB) - Other	
Total 4120 · Federal Entitlements (NCLB)	202,000
4110 · ARRA Funds	
4115 · ARRA - EDU JOBS	
4114 · ARRA - School Impr 1003a	
4113 · ARRA - IDEA Part B	
4111 · ARRA - Title I	
Total 4110 · ARRA Funds	-
Total 4000 · Public Funds	5,852,395
4130 · Other Government Funds	
4154 · School Garden Grant	
4171 · DC Pay Grant	
4159 · Schools Technology Fund	
4155-Special Population Grant	
4153 · Education Technology Grant	
4158 · SOAR-Replication Grant	
4156 · SOAR-Spec Pops ELL	
4157 · Early Warning Grant	
4170-Soar Academic Quality	
PE Grant	

4152 · 21st Century	
4151 · Education Pioneers	
4149 · Race to the Top	
4148 · Special Facilities Grant	
4147 · E-Rate	
4144 · City Build	
4145 · State Charter Schools FIG	
4142 · Quality Schools Incentive Grant	
4700 · Medicaid	
Improving Academic Quality	
4130 · Other Government Funds - Other	250,000
Total 4130 · Other Government Funds	250,000
4260 · Foundations & Trusts	-
4290 · Private Grants and Donations	
4250 · Contributions Corporate	25,000
Family Campaign	
4200 · Contributions Individuals	50,000
4290 · Private Grants and Donations - Other	50,000
Total 4290 · Private Grants and Donations	125,000
4300 · Grant Awards	
4360 · In-Kind Contributions	
4400 · Program Fees	85,000
4600 · Activities Fees (student)	44,000
4610 · Aftercare Income	320,000
4800 · Other Income	
4910 · Interest Income	3,000
4850 · Building Rental	20,000
4500 · Special Events/Fundraising	25,000
4802 · Stokes Kitchen Income	500,000
4801 · Income-To Be Verified	
4800 · Other Income - Other	5,000
Total 4800 · Other Income	553,000
4920 Unrealized Gains (Losses)	
4940 · Breakfast/Lunch Fees	
4162 · CACFP-Child & Adult Care Food P	70,000
4161 · Fresh Fruit & Veggies (USDA)	18,000
4160 · NSL	160,000
4940 · Breakfast/Lunch Fees - Other	55,000
Total 4940 · Breakfast/Lunch Fees	303,000
Total Income	7,532,395
Gross Profit	7,532,395

Expense**5000 · 1-PERSONNEL SALARIES & BENEFITS**

5003 · Administrative Salaries	653,296
5004 · Instructional Salaries	2,514,579
Tutoring and Substitutes	60,830
5011 · Development Salaries	-
5110 · Other Education Professionals	415,956
5120 · Student Support Salaries	-
5002 · Food Service	286,903
5007 · Family Support	7,066
5120 · Student Support Salaries - Other	90,911
Total 5120 · Student Support Salaries	384,880
5130 · Other Staff Salaries	-
Total Salaries	4,029,541
5200 · Employee Benefits	
5201 · Life Insurance	-
Pension Expense	51,360
5202 · Health Insurance	326,062
5240 · TIAA CREF	138,729
5100 · Employer Taxes	315,762
5200 · Employee Benefits - Other	
Total 5200 · Employee Benefits	831,914
5300 · Professional Development	102,520
5000 · 1-PERSONNEL SALARIES & BENEFITS - Other	
Total 5000 · 1-PERSONNEL SALARIES & BENEFITS	4,963,975
6000 · 2-DIRECT STUDENT COSTS	
6101 · Textbooks	25,000
6110 · Saturday Academy Exp.	-
5600 · Student/Instructional Materials	22,774
5700 · Student/Instructional Supplies	44,112
6145 · Library & Media Center Material	-

6155 • Student Assessment Materials	10,881
6103 • School Activities	
6103.1 • Field trips	9,987
6103.2 • Study Trips	61,800
6103 • School Activities - Other	-
Total 6103 • School Activities	71,787
6165 • Technology	6,868
6175 • Classroom Furnishings	
6130 • Transportation & Contracted Svc	-
6135 • Bus Tokens/Bus Fees	-
5560 • Contracted Professional Svcs	
5560.7 • Other - Educ Prof Services	131,633
5560.6 • Tutoring Services	10,000
5560.1 • Direct Occupational Therapy Ser	25,773
5560.2 • Psychological Services	28,087
5560.3 • Dance Instruction	-
5560.4 • Speech & language Services	40,604
5560.5 • Translation Services	-
5560 • Contracted Professional Svcs - Other	81,101
Total 5560 • Contracted Professional Svcs	317,198
6125 • Miscellaneous Student Expense	31,450
7003 • Food Services	
6700 • Food Service	296,914
7003 • Food Services - Other	-
Total 7003 • Food Services	296,914
Total 6000 • 2-DIRECT STUDENT COSTS	826,984
6400 • 3-OCCUPANCY EXPENSES	
6416 • Loan Fee Expensed	16,191
6415 • Mortgage Interest Expense	326,727
6402 • Utilities	
6402.1 • Electric	68,614
6402.2 • Gas	18,380
6402.3 • Water	25,273
6402 • Utilities - Other	-
Total 6402 • Utilities	112,267
6403 • Contracted Building Svcs	
6602 • Equipment & Furnishings	2,815
6413 • Contracted Bldg Svs - Other	-
6600 • Equipment Rental	12,142
6411 • landscaping Services	3,003

6410 • Pest Control	1,194
6409 • Equipment Repairs & Maintenance	8,752
6408 • Security Services	49,004
6407 • Cleaning/Janitorial Svcs	102,370
6403 • Contracted Building Svcs - Other	10,040
Total 6403 • Contracted Building Svcs	189,320
6404 • Building Repairs & Maintenance	27,347
6412 • Depreciation Exp. - Building	275,000
Total 6400 • 3-OCCUPANCY EXPENSES	946,852
6450 • 4-OFFICE EXPENSES	
6550 • Capital Lease Interest Expense	1,106
6200 • Office Supplies	30,232
6380 • Office Equip Rental/Maintenance	-
5500 • Professional Svc Fees	
6006 • Professional Svs Fees - Other	10,000
5290 • Payroll Service Fees	7,159
6001 • Legal Fees	20,000
6002 • Accounting & Audit	56,967
6004 • Computers & network Services	53,956
5500 • Professional Svc Fees - Other	-
Total 5500 • Professional Svc Fees	148,082
6201 • Computer & Tech Supplies	15,120
6301 • Postage and Shipping	549
6302 • Printing & Copying	72,052
6406 • Communications/Telephone	88,547
7100 • Depreciation Expense	20,600
Total 6450 • 4-OFFICE EXPENSES	376,288
6510 • 5-GENERAL EXPENSES	
7005 • Stokes Kitchen Expense	209,902
7006 • DCI	
7999 • Unforeseen Expenses	
6545 • Other General Expense	
6504 • Other General Expense	-
9010 • Bad Debt Expense	-
6540 • Property tax	-
6530 • Finance Charge	-
6525 • Fees, Other	-
6520 • Donations	-
9000 • Miscellaneous	-
9005 • Expense - To Be Verified	-
9000 • Miscellaneous - Other	-
Total 9000 • Miscellaneous	-

7002 · Entertainment/Meals	10,000
6809 · Penalties & Late Fees	
6545-other general expense-Other	
6500 · Bank/Credit Card Service Fees	25,609
Total 6545 · Other General Expense	35,609
6102 · Dues & Subscriptions	9,825
6003 · Insurance	
6003.1 · Auto	5,439
6003.2 · General Liability & Property	26,211
6003.3 · Umbrella policy	16,357
6003.4 · Workman's Comp.	28,289
6003 · Insurance - Other	421
Total 6003 · Insurance	76,718
6800 · Transportation	
6502 · Auto Exp-Fuel/Maint/Repairs	9,179
6802 · Travel	-
6803 · Parking/Mileage/Taxis	205
6800 · Transportation - Other	-
Total 6800 · Transportation	9,384
9003 · DC PCSB Admin Fee	76,000
7001 · Marketing/Advertising	793
Total 6510 · 5-GENERAL EXPENSES	418,231
Total Expense	7,532,331
Net Income	64