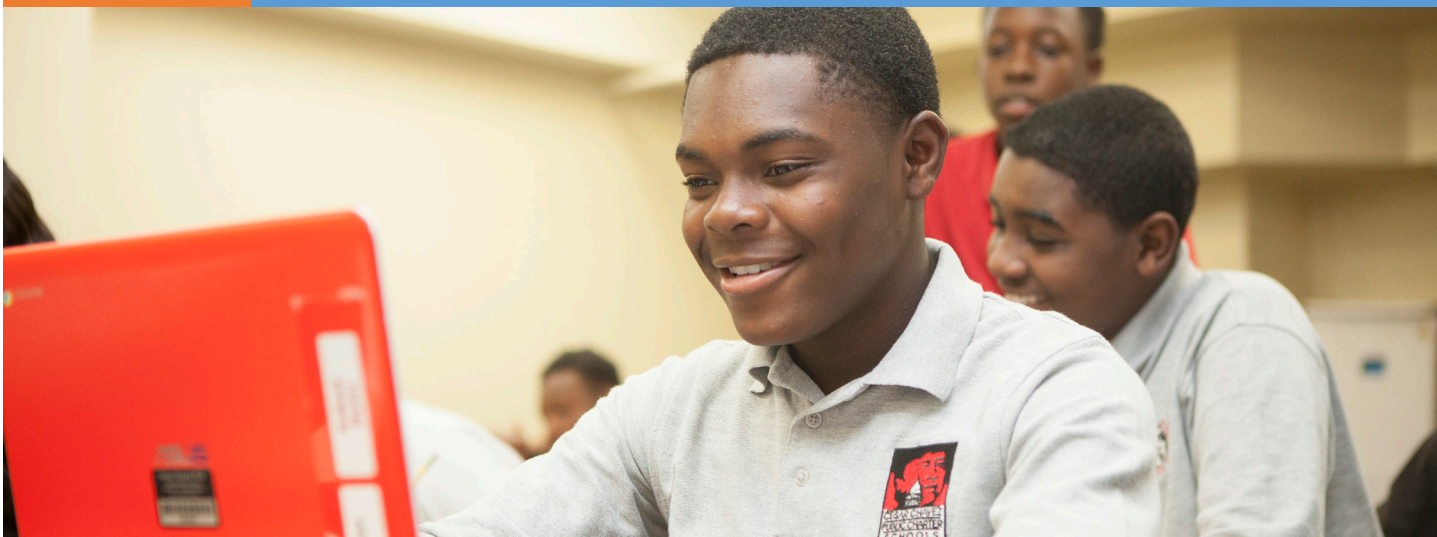




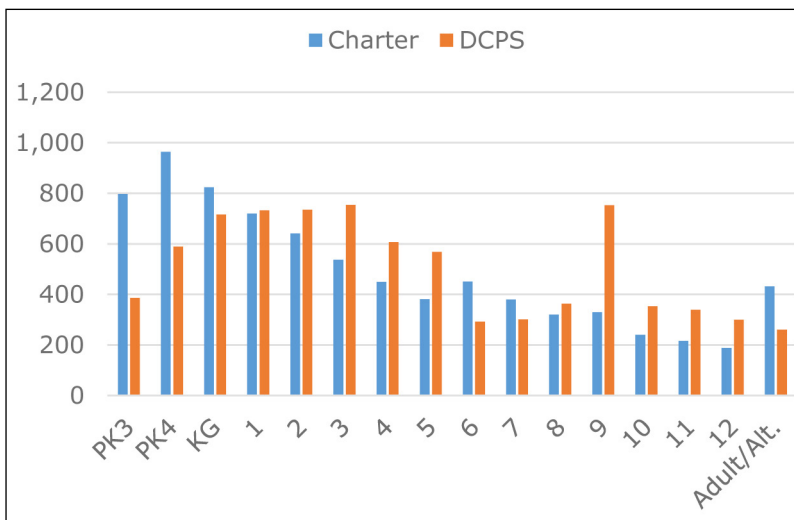
# Ward 8 Public Charter Schools



## Highlights

- Ward 8 has 21 public charter schools serving 7,873 students and 19 DCPS schools serving 8,054 students.
- Of the 9,888 public charter school students living in Ward 8, 5,694 attend public charter schools that are located in Ward 8.
- Ward 8 has 13 schools that serve elementary grades, greater than other grade levels.

## Enrollment in Ward 8 by grade and sector



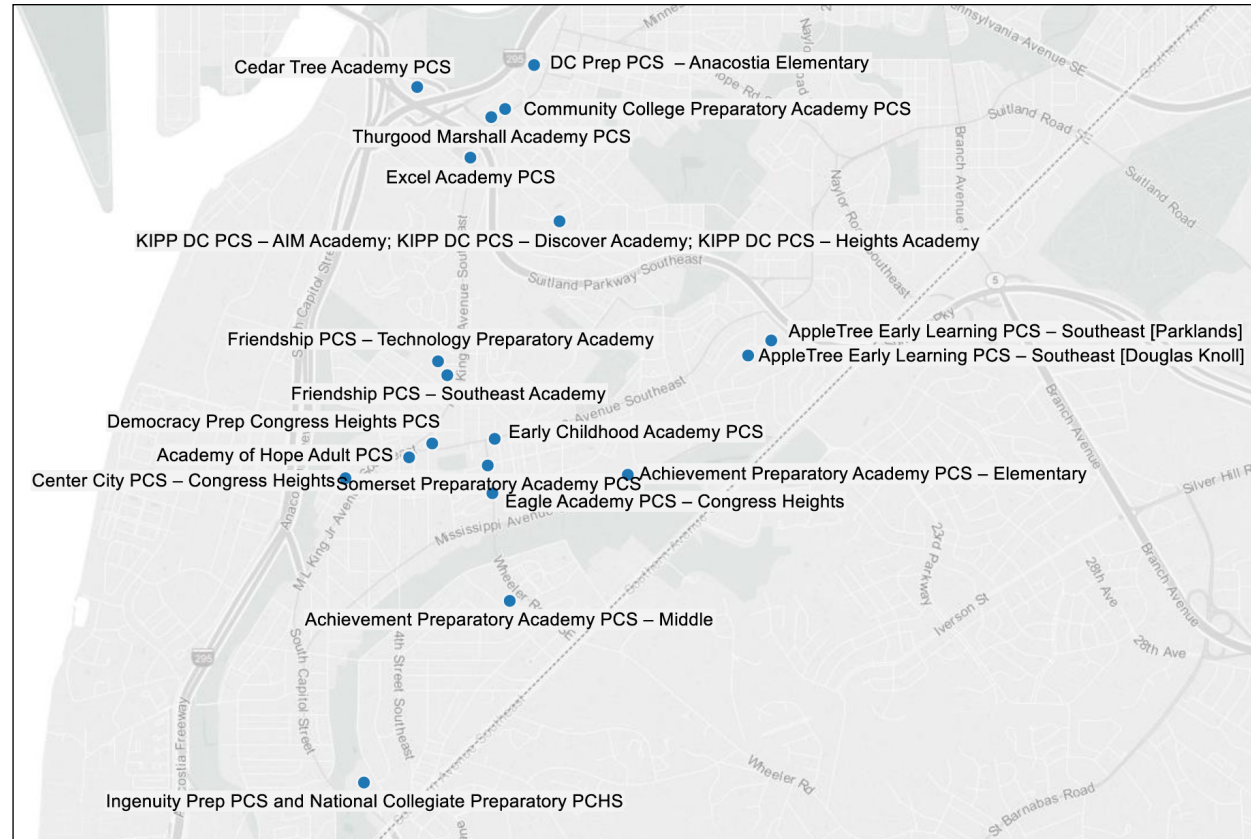
## Five public charter schools in Ward 8 are Tier 1:

- Achievement Preparatory PCS – Middle
- Center City PCS – Congress Heights
- Friendship PCS – Southeast Academy
- KIPP DC PCS – AIM Academy
- Thurgood Marshall Academy PCS

2014 PMF Tier	Schools in Ward 6
Tier 1	4
Tier 2	6
Tier 3	0
Untiered	11
<b>Total</b>	<b>21</b>

Grades served	Number of public charter schools serving grades in Ward 8
Pre-kindergarten	11
Elementary	13
Middle	7
High	4
Adult and Alternative	2
Special Education School	0

## Map of charter schools in Ward 8



## Ward 8 schools and program offerings

Campus name	Students living in Ward 8	Students living outside Ward 8	SY15-16 enrollment	Lowest Grade Served	Highest Grade Served	2014 PMF Tier	Program offerings
Academy of Hope Adult PCS			110	Adult	Adult	N/A	Computer Skills; Dual Enrollment
Achievement Preparatory PCS - Elementary	199	74	273	K	3	N/A	College Prep
Achievement Preparatory PCS - Middle	280	103	383	4	8	Tier 1	College Prep
AppleTree Early Learning PCS - Southeast	133	44	177	PK3	PK4	N/A	Early Childhood
Cedar Tree Academy PCS	254	112	366	PK3	K	N/A	Early Childhood
Center City PCS - Congress Heights	209	34	243	PK4	8	Tier 1	College Prep
Community College Preparatory Academy PCS			322	Adult	Adult	N/A	HVAC Training; National Customer Service; Computer Skills; Automotive Technology; Dual Enrollment
DC Preparatory Academy PCS - Anacostia Elementary	83	58	141	PK3	PK4	N/A	College Prep
Democracy Prep Congress Heights PCS	509	118	627	PK3	6	N/A	College Prep
Eagle Academy PCS - Congress Heights	570	215	785	PK3	3	N/A	STEM
Early Childhood Academy PCS	189	73	262	PK3	3	N/A	College Prep
Excel Academy PCS	550	181	731	PK3	3	N/A	Single sex (female)
Friendship PCS - Southeast Academy	455	91	546	PK3	5	Tier 1	College Prep
Friendship PCS - Technology Preparatory Academy	465	78	543	6	12	Tier 2	Career/Technical; College Prep
Ingenuity Prep PCS	246	42	288	PK3	2	N/A	Blended learning
KIPP DC PCS - AIM Academy	286	64	350	5	8	Tier 1	College Prep
KIPP DC PCS - Discover Academy	254	92	346	PK3	K	N/A	College Prep
KIPP DC PCS - Heights Academy	318	116	434	1	4	N/A	College Prep
National Collegiate Preparatory PCHS	209	71	280	9	12	Tier 2	College Prep; International Baccalaureate





**Ward 8 schools and program offerings (continued)**

Campus name	Students living in Ward 8	Students living outside Ward 8	SY15-16 enrollment	Lowest Grade Served	Highest Grade Served	2014 PMF Tier	Program offerings
Somerset Preparatory Academy PCS	249	30	279	6	10	N/A	International Baccalaureate
Thurgood Marshall Academy PCS	236	151	387	9	12	Tier 1	Public Policy/Law
<b>Total</b>	<b>5,694</b>	<b>1,747</b>	<b>7,873</b>				

**Notes:**

- (1) Schools that have missing data for where students live have two facilities in two different Wards, so it is not possible to identify which students attend the Ward 8 school.
- (2) Due to privacy reasons, the number of students attending a public charter school and living in a certain area cannot be reported if it is fewer than 10.



**Public charter schools outside of Ward 8 attended by students who live in Ward 8**

Public charter schools	Students living in Ward 8	2014 PMF Tier	School Ward
Friendship PCS – Collegiate Academy	206	Tier 2	7
KIPP DC PCS – College Preparatory Academy	203	Tier 1	5
Community College Preparatory Academy PCS	172	N/A	6 and 8
SEED PCS of Washington, DC	125	MS: Tier 2; HS: Tier 1	7
Richard Wright PCS for Journalism and Media Arts	120	Tier 2	6
César Chávez PCS for Public Policy – Capitol Hill	117	Tier 2	6
Friendship PCS – Chamberlain Elementary	112	N/A	6
Friendship PCS – Chamberlain Middle	103	Tier 1	6
The Children’s Guild DC PCS	100	N/A	5
Academy of Hope Adult PCS	99	N/A	5 and 8
William E. Doar, Jr. PCS for the Performing Arts	99	Tier 2	5
KIPP DC PCS – Promise Academy	98	Tier 1	7
Potomac Preparatory PCS	91	Tier 2	5
DC Preparatory Academy PCS – Benning Elementary	75	N/A	7
Center City PCS – Capitol Hill	74	Tier 2	6
César Chávez PCS for Public Policy – Parkside High	71	Tier 1	7
KIPP DC PCS – KEY Academy	70	Tier 1	7
Hope Community PCS – Tolson	67	Tier 2	5
DC Preparatory Academy PCS – Edgewood Elementary	64	N/A	5
Meridian PCS	63	Tier 2	1
IDEA PCS	62	Tier 2	7
Kingsman Academy PCS	62	N/A	6
Friendship PCS – Armstrong	61	N/A	5
Two Rivers PCS – 4th Street	59	Tier 1	6
KIPP DC PCS – WILL Academy	58	Tier 1	6
KIPP DC PCS – Lead Academy	57	N/A	6
Howard University Middle School of Mathematics and Science PCS	56	Tier 2	1
St. Coletta Special Education PCS	56	N/A	7
Washington Mathematics Science Technology PCHS	53	Tier 2	5
KIPP DC PCS – LEAP Academy	52	N/A	7
DC Preparatory Academy PCS – Edgewood Middle	48	Tier 1	5
Friendship PCS – Blow-Pierce Elementary	48	N/A	7
Perry Street Preparatory PCS	45	Tier 2	5

Public charter schools outside of Ward 8 attended by students who live in Ward 8 (continued)

Public charter schools	Students living in Ward 8	2014 PMF Tier	School Ward
César Chávez PCS for Public Policy – Parkside Middle	44	Tier 2	7
KIPP DC PCS – Connect Academy	44	N/A	5
KIPP DC PCS – Quest Academy	44	N/A	7
Maya Angelou PCS – High School	44	N/A	7
Washington Global PCS	44	N/A	6
DC Preparatory Academy PCS – Benning Middle	43	N/A	7
KIPP DC PCS – Northeast Academy	43	N/A	5
DC Scholars PCS	42	Tier 2	7
KIPP DC PCS – Grow Academy	39	N/A	6
Hope Community PCS – Lamond	38	Tier 2	4
BASIS DC PCS	35	Tier 1	2
Eagle Academy PCS – Capitol Riverfront	35	N/A	6
KIPP DC PCS – Arts & Technology Academy	33	N/A	7
Carlos Rosario International PCS	32	N/A	1 and 5
Friendship PCS – Online	32	N/A	N/A
Friendship PCS – Woodridge Elementary	32	N/A	5
Paul PCS – International High School	32	N/A	4
KIPP DC PCS – Spring Academy	31	N/A	5
Ideal Academy PCS	30	Tier 2	4
AppleTree Early Learning PCS – Oklahoma	29	N/A	7
Friendship PCS – Blow-Pierce Middle	28	Tier 2	7
AppleTree Early Learning PCS – Southwest	27	N/A	6
Youthbuild PCS	27	N/A	1
Friendship PCS – Woodridge Middle	26	Tier 1	5
Mary McLeod Bethune Day Academy PCS	26	Tier 2	4 and 5
Mundo Verde Bilingual PCS	26	N/A	5
Center City PCS – Shaw	25	Tier 1	6
E.L. Haynes PCS – High	24	Tier 2	4
LAYC Career Academy PCS	24	N/A	1
Maya Angelou PCS – Young Adult Learning Center	24	N/A	7
E.L. Haynes PCS – Middle	23	Tier 2	1
Inspired Teaching Demonstration PCS	23	Tier 2	5
Center City PCS – Trinidad	18	Tier 3	5
Harmony DC PCS – School of Excellence	17	N/A	5
Paul PCS – Middle School	17	N/A	4
Washington Latin PCS – Upper School	17	Tier 1	4
Capital City PCS – High	16	Tier 1	4

Public charter schools outside of Ward 8 attended by students who live in Ward 8 (continued)

Public charter schools	Students living in Ward 8	2014 PMF Tier	School Ward
Two Rivers PCS – Young	16	N/A	5
Washington Yu Ying PCS	15	Tier 1	5
Bridges PCS	14	N/A	4
Capital City PCS – Middle	13	Tier 2	4
E.L. Haynes PCS – Elementary	13	Tier 2	4
Washington Latin PCS – Middle School	13	Tier 2	4
César Chávez PCS for Public Policy – Chavez Prep	11	Tier 2	1
Center City PCS – Petworth		Tier 2	4
District of Columbia International School		N/A	1
KIPP DC PCS – Valor Academy		N/A	7
Creative Minds International PCS		N/A	5
Monument Academy PCS		N/A	6
Capital City PCS – Lower		Tier 2	4
Shining Stars Montessori Academy PCS		N/A	4
AppleTree Early Learning PCS – Columbia Heights		N/A	1
Elsie Whitlow Stokes Community Freedom PCS		Tier 2	5
Latin American Montessori Bilingual PCS		Tier 1	4 and 5
Lee Montessori PCS		N/A	5
Roots PCS		Tier 3	4
The Next Step/El Próximo Paso PCS		N/A	1
AppleTree Early Learning PCS – Lincoln Park		N/A	6
Briya PCS		N/A	1 and 4
Sela PCS		N/A	4
Center City PCS – Brightwood		Tier 1	4
DC Bilingual PCS		Tier 2	5

**Total** **At least 4,075**

**Notes:**

(1) Due to privacy reasons, the number of students attending a public charter school cannot be reported if it is fewer than 10.

(2) Schools that have missing data for where students live have two facilities in two different Wards, so it is not possible to identify which students attend the Ward 8 school.



