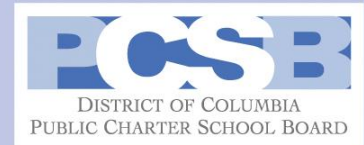


# Early Childhood PMF Task Force Meeting

Tuesday, October 7, 2014  
1:00 pm – 3:00 pm



# Early Childhood Performance Management Framework (EC PMF) Meeting Goals:

- a. Today's Meeting Expectations
- b. Performance Metrics Updates- implemented business rules
- c. Floors & Targets Business rules
- d. Tier Discussion
- e. FAY Business Rule

# Task Force Norms and Expectations

1. Be goal oriented and solutions driven
2. Be respectful
3. Step up, Step back
4. One vote per LEA
5. Start and stop on time
6. Share proposals that are best for all LEA's, not just your own

# Timeline

- October 14 Task Force Meeting 9:00 am – 11:00 am (If needed)
- November Mission Specific Goals Committee Meets
- November 2014-15 PMF Technical Guide opened for public comment
- December Public hearing at board meeting for PMF Technical Guide
- January 2014-15 PMF Technical Guide approved by PCSB Board
- February EC PMF Task Force meeting - MSG
- May EC PMF Task Force meeting if needed
- June Data collection begins for 2014-15

# Review of Framework:

## ABC Academy PCS

2014 School Performance Report

(2013-2014)

Grades measured: Prekindergarten-3 through 3<sup>rd</sup>

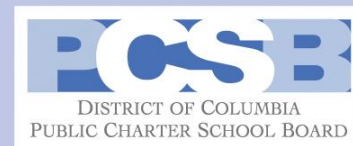
Pre-Kindergarten (PK3 – PK4) Grades		
Student Progress: Academic Improvement over time	Literacy/Language	87.8%
	Mathematics	77.2%
	Social-Emotional Learning	85.4%
Teacher Interaction: Classroom Assessment Scoring System (CLASS)	Emotional Support	6
	Classroom Organization	5.2
	Instructional Support	2.1
Leading Indicator: Predictors of future student progress and achievement	Attendance	89.2%
Kindergarten – Second Grades		
Student Achievement/Progress: Meeting or exceeding academic standards and academic improvement over time	Literacy	74.0%
	Mathematics	63.3%
	Social-Emotional Learning	81.8%
Leading Indicator: Predictors of future student progress and achievement	Attendance	91.7%
	Re-Enrollment	84.0%
Third Grade		
Student Achievement: Proficient or Advanced-meeting or exceeding academic standards	DC CAS Reading	48.6%
	DC CAS Mathematics	54.8%
Student Achievement: Advanced Only	DC CAS Reading	3.9%
	DC CAS Mathematics	8.7%
Leading Indicator	Attendance	95.0%
	Re-Enrollment	85.7%

# Items for Vote

1. FAY Business Rule
2. Floor/Target Business Rules

# Implemented Business Rules

For the 2014-15 EC PMF





# Norm Referenced Assessments

Business Rule agreed upon by task force February 2014:

Norm referenced Achievement Metrics:

Make the achievement target the 40<sup>th</sup> percentile/stanine 5 unless the probability of students subsequently scoring proficient on the DC CAS is 45% or lower at that level and the probability increases substantially (above 55%) at the next decile/stanine.

The level can be lowered if the research supports this finding. For the first three years, the achievement level will not be increased or decreased more than one level above or below the 50<sup>th</sup> percentile/stanine 5.

\*Business rule can only be implemented if power analysis is .80 or greater and desired n size has been met



# Norm Referenced Changes for 2014-15

Assessment	Business Rule Implemented Prior to Equating	2014 Equating
NWEA MAP - Math	40 <sup>th</sup> percentile	No change
NWEA MAP - Reading	40 <sup>th</sup> percentile	No change
GMADE – Math	Stanine 5	No change
SAT 10 – Math	Stanine 5	No change
SAT 10 – Reading	Stanine 6*	No change
Terra Nova – Math	40 <sup>th</sup> percentile	No change
Terra Nova - Reading	40 <sup>th</sup> percentile	No change

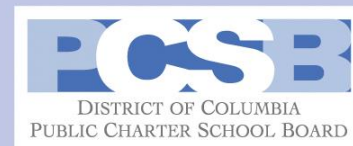
\* Changed based on equating last year for 2013-14

## 3<sup>rd</sup> Grade – Transition to PARCC

- Remain Consistent with Elementary/Middle PMF
- Please attend the ESMS Task Force Meeting on October 16 at 10 am

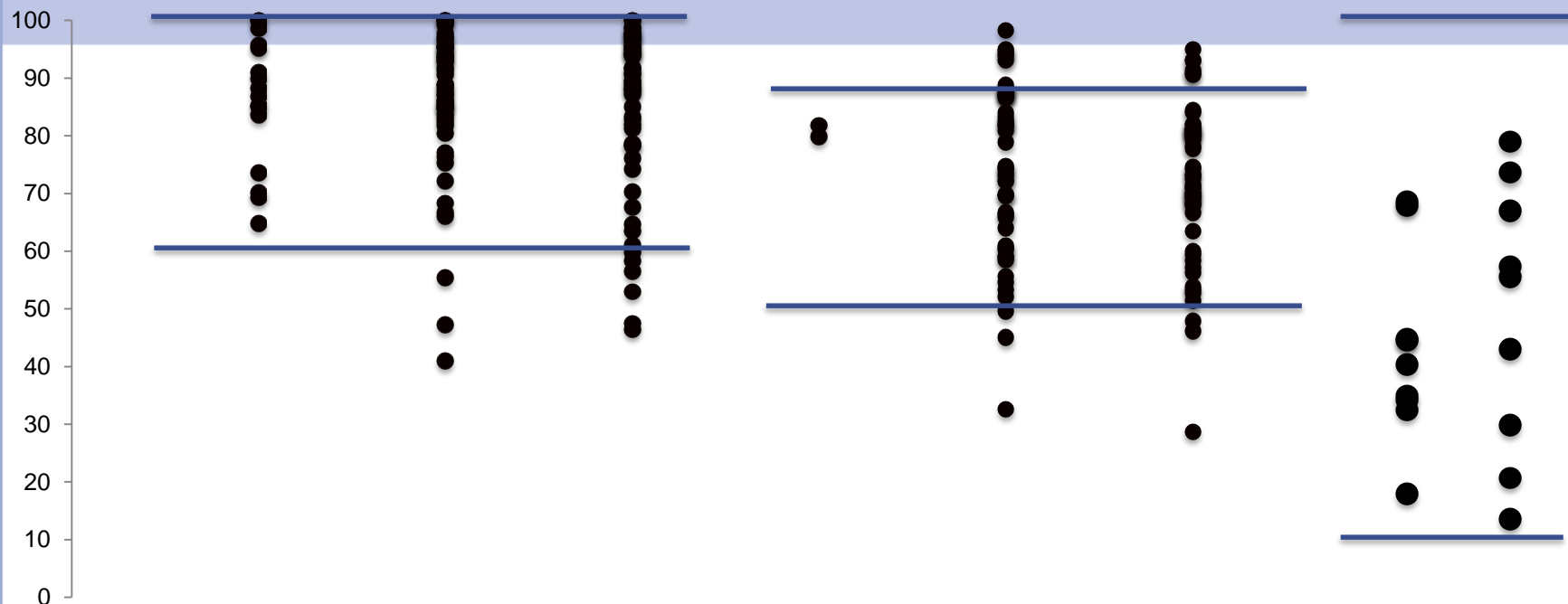
# Overall Scores

2013-14



# % OF STUDENTS MEETING MAKING ACHIEVEMENT OR PROGRESS, OVERALL

## ALL ASSESSMENTS



90th	99.2	98.7	98.2	81.6	88.5	90.8
Median	86.9	87.8	89.2	80.9	73.0	71.1
10th	67.5	59.7	59.0	80.1	51.6	52.4

**SEL**

**Math**

**Literacy**

**SEL**

**Math**

**Literacy**

**Reading**

**Math**

**Pre-K**

**K-2**

**DC CAS**

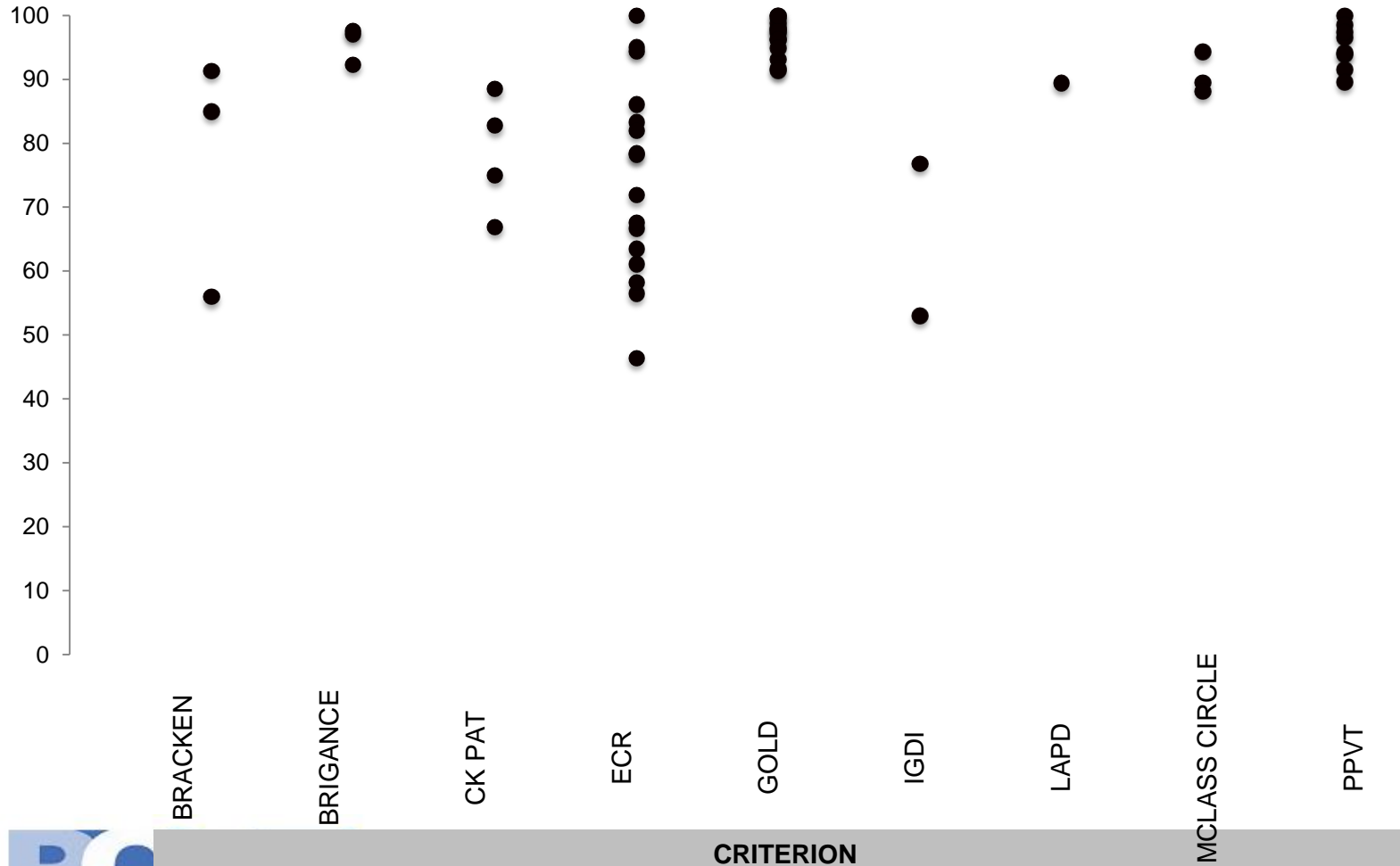


DISTRICT OF COLUMBIA  
PUBLIC CHARTER SCHOOL BOARD

\*Note: MAP set to 40<sup>th</sup> percentile for achievement target.

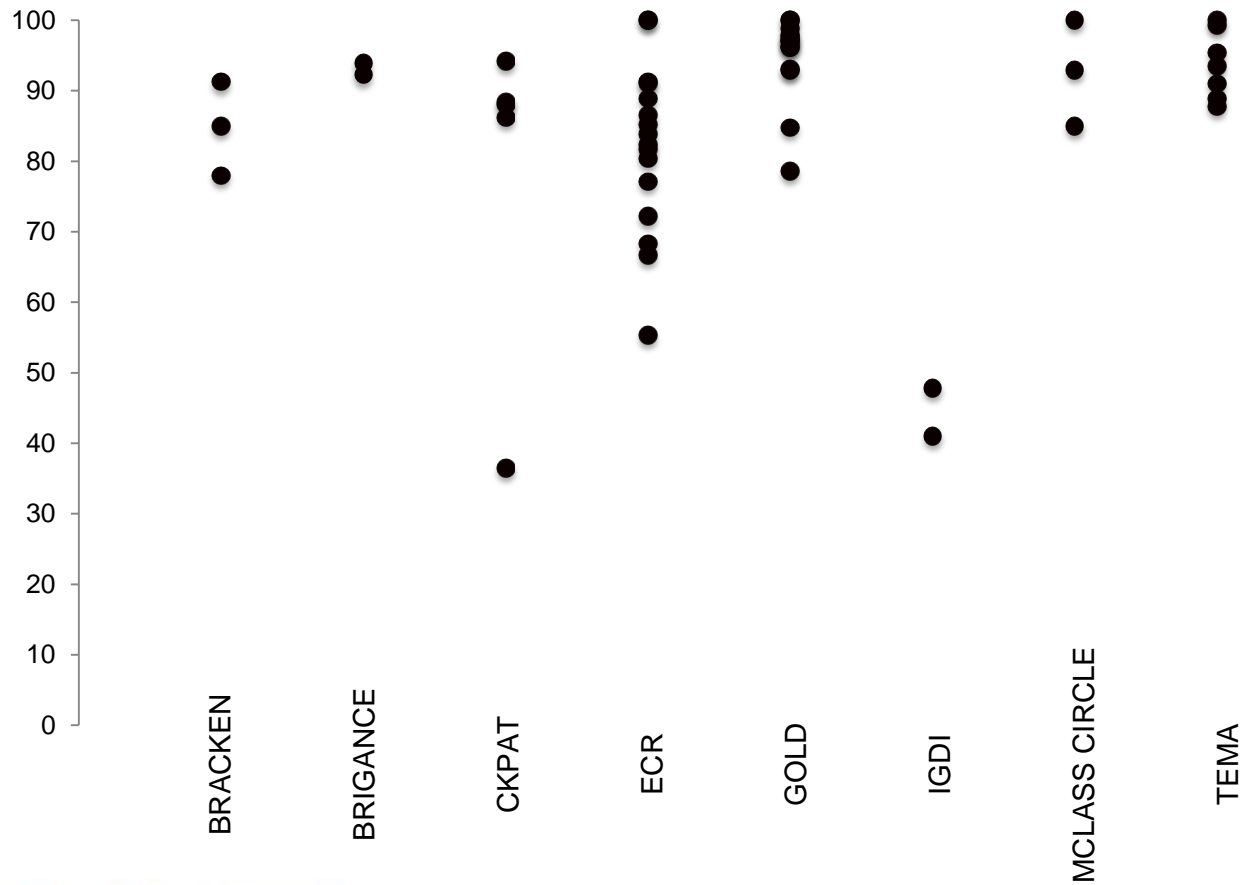
# % OF STUDENTS MEETING MAKING ACHIEVEMENT OR PROGRESS, BY TEST

## LITERACY PK



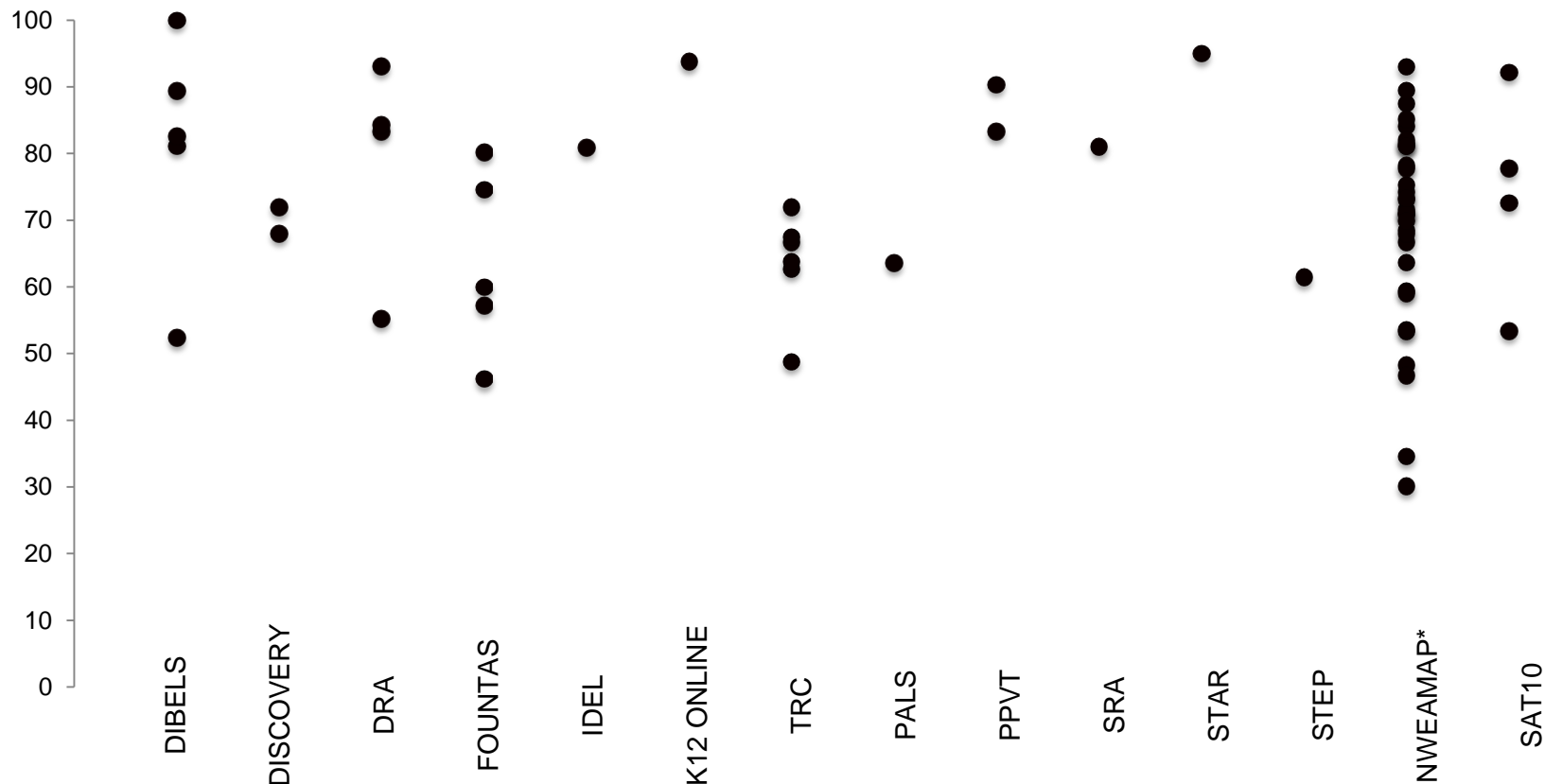
# % OF STUDENTS MEETING MAKING ACHIEVEMENT OR PROGRESS, BY TEST

## MATH PK



# % OF STUDENTS MEETING MAKING ACHIEVEMENT OR PROGRESS, BY TEST

## LITERACY K-2



CRITERION

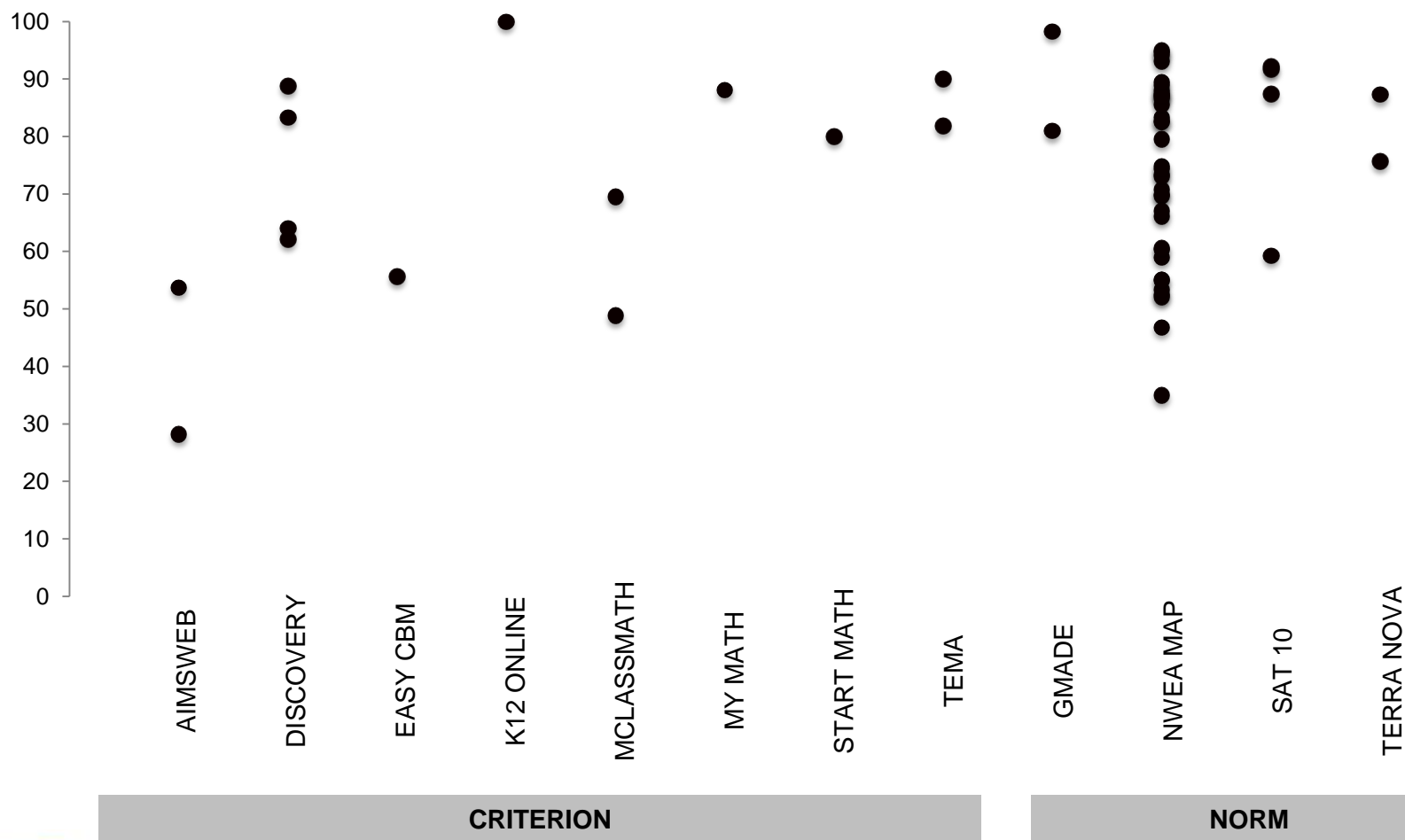
NORM

\*Note: MAP set to 40<sup>th</sup> percentile for achievement target. All other assessments at 13-14 levels.



# % OF STUDENTS MEETING MAKING ACHIEVEMENT OR PROGRESS, BY TEST

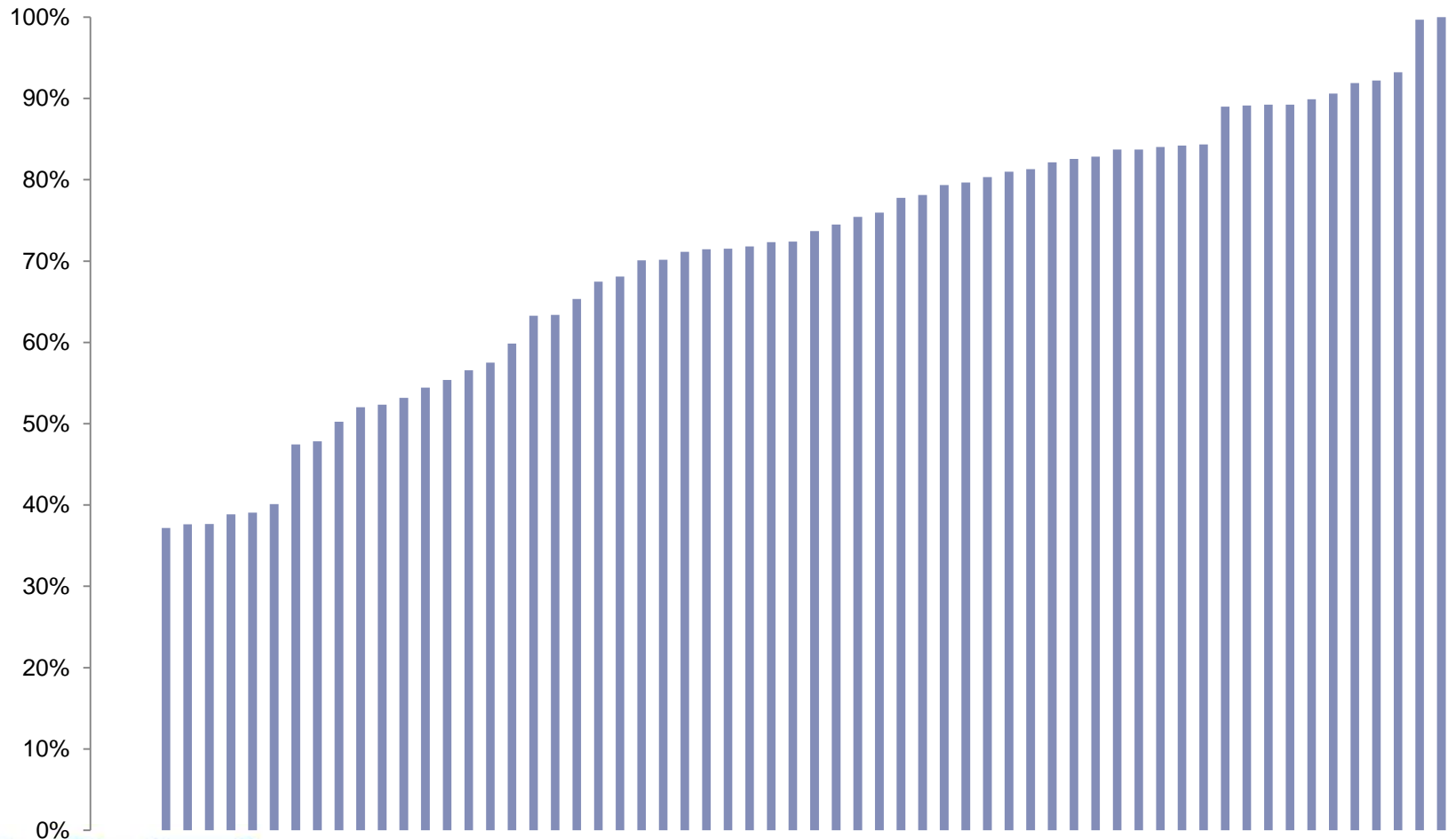
## MATH K-2



\*Note: MAP set to 40<sup>th</sup> percentile for achievement target. All other assessments at 13-14 levels.

# Distribution of Overall Scores

% of Points Earned by School // EC PMF



# Proposed Tier Range with Floor/Target Proposal

**Proposed Tier Range:** 80% for Tier 1 and 50% for tier 2

**Floors and Target Business Rule – 2 options:**

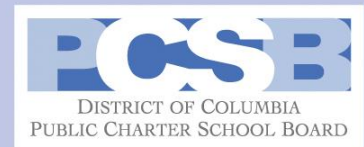
2014-15 – Keep floors/targets for two years as voted on by task force (starting 2013-14)

1. 3-year weighted average of 10<sup>th</sup> and 90<sup>th</sup> percentile (consistent with ESMS)
2. 2015-16 and forward – Discuss a set increase of floors and targets until a set point is reached where the floors and targets would remain constant.

Example:

2014-15	Ultimate Goal of Quality	Annual Increase Until Ultimate Goal is reached	Goal reached in year
K-2 Literacy Floor = 50%	K-2 Literacy Floor = 68%	2%	8 years – 2022-2023
K-2 Literacy Target = 90%	K-2 Literacy Target = 95%	1%	5 years – 2019-2020

# Updates, Information & Business Rule Clarification



# Current Floors and Targets

The task force voted to hold floors and targets constant for at least 2 years for unknown measure

Measure	Floor	Target
PK Progress (Literacy, Math, SEL)	60	100
CLASS: Emotional Support & Classroom Organization	3	6
CLASS: Instructional Support	1	4
K-2 Achievement/Progress	50	90
3 <sup>rd</sup> Grade PARCC	Consistent with ESMS	

# Update on Attendance & Re-enrollment Business Rule

Variable	10 <sup>th</sup> pctl		Formula Floor (2015)	90 <sup>th</sup> pctl		Formula Target (2015)
	2013	2014		2013	2014	
Attendance PK	84.5%	87.2%	85.9%	94.2%	94.5%	94.4%
Attendance K-2	89.9%	89.5%	89.7%	95.5%	95.6%	95.6%
Re-enrollment K-2	61.0%	68.6%	64.8%	94.3%	95.8%	95.1%

# CLASS Sector Averages

Variable	10 <sup>th</sup> pctl		Agreed Floor	90 <sup>th</sup> pctl		Agreed Floor
	2013	2014		2013	2014	
Emotional Support	4.9	5.27	3	5.87	6.02	6
Classroom Organization	3.99	4.68	3	5.63	5.70	6
Instructional Support	1.27	1.83	1	3.81	3.39	4



# Business Rules – Clarification

1. **FAY** – Currently students enrolled on both the Audit date and the first day of state-wide testing and 85% of the days in between.

Proposed Change: Students enrolled on both the Audit date\* and May 1 and 85% of the days in between.

\*If the publisher has specific testing windows from the start of school year that cannot be moved, students enrolled on the last day of the testing window in the fall will count for the Audit date.

# Business Rule - Clarifications

## 1. Grade-Bands Weight

Current: Weight of each grade-band based on number of FAY students

2. Failure to Submit Score(s) – school receives a score of zero for that metric(s)

# Appendix – EC PMF Structure

## Pre-Kindergarten: Grades PK-3 and PK-4

Weight	Indicator	Metric	Weight without SEL	Weight with SEL
40%	Student Progress	Language/Literacy	20%	14%
		Mathematical Thinking	20%	14%
		Social-Emotional Learning (SEL) - Optional	0%	12%
40%	Teacher Interaction (CLASS)	Emotional Support	13.3%	13.3%
		Classroom Organization	13.3%	13.3%
		Instructional Support	13.3%	13.3%
10%	Leading Indicators	Attendance	10%	10%
10%	Mission Specific	Optional – If Mission Specific is not used, 5% will be added to Student Progress and Teacher Interaction	10%	10%

# Appendix – EC PMF Structure (cont.)

## Lower Elementary: Grades K-2/3

Weight	Indicator sub-weight	Indicator	Metric	Weight without SEL	Weight with SEL
70%	(Percent of K-2 students out of K-3) * 70%	Student Achievement/Progress	Reading	35%	25%
			Mathematics	35%	25%
			Social-Emotional Learning (SEL) – Optional, progress only	0%	20%
	(Percent of 3 <sup>rd</sup> grade students out of K-3) * 70%	Student Achievement	DC-CAS Proficient and Above in Reading	35%	NA
			DC-CAS Proficient and Above in Math	35%	NA
			DC-CAS Advanced in Reading	5%	NA
			DC-CAS Advanced in Math	5%	NA
	NA	Leading Indicator	Attendance	10%	10%
			Re-Enrollment	10%	10%
10%	NA	Mission Specific	Optional – If Mission Specific is not used, 5% will be added to Reading and Mathematics	10%	10%