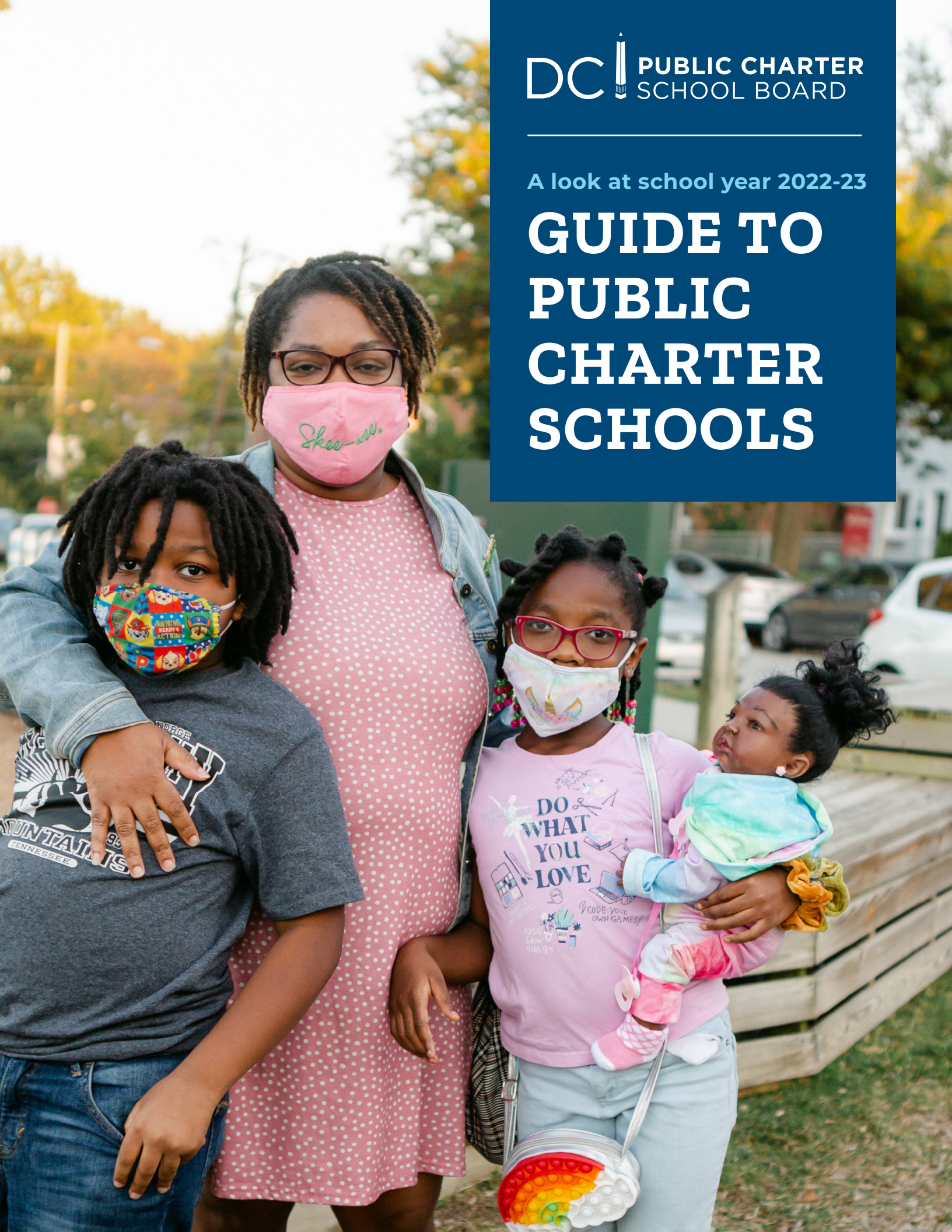


A look at school year 2022-23

# GUIDE TO PUBLIC CHARTER SCHOOLS







Students and families,

I would first like to thank you for your continued dedication and support of DC public charter schools. Throughout the pandemic, it has not been easy returning to in-person instruction as a student, but you are doing it with stride. As a parent, your resilience is remarkable, and your support for your children has made it possible for them to return to in-person learning with joy and eagerness to learn. At the DC Public Charter School Board, we are committed to creating a network of excellent public charter schools that will offer families quality, equity, and diverse educational choices.

Please use the 2022-23 Guide to Public Charter Schools to learn more about DC's public charter schools. This guide will share information about locations, program types, grades served, and much more.

We are #DCCharterProud!

Sincerely,

Dr. Michelle J. Walker-Davis  
Executive Director  
DC Public Charter School Board

# Pre-Kindergarten - 12th Grade

| SCHOOL NAME   | WARD | PROGRAM TYPE  | ADDRESS                            | GRADES    |
|---|------|---|------------------------------------|-----------|
| Achievement Preparatory Academy PCS - Wahler Place Elementary | 8    | Leadership Development  | 908 Wahler Pl, SE                  | PK3 - 4   |
| AppleTree Early Learning Center PCS - Columbia Heights        | 1    | Early Childhood   | 2750 14th St, NW                   | PK3 - PK4 |
| AppleTree Early Learning Center PCS - Douglas Knoll           | 8    | Early Childhood   | 2017 Savannah Terrace SE           | PK3 - PK4 |
| AppleTree Early Learning Center PCS - Lincoln Park            | 6    | Early Childhood   | 138 12th St, NE                    | PK3 - PK4 |
| AppleTree Early Learning Center PCS - Oklahoma Avenue         | 7    | Early Childhood   | 330 21st St, NE                    | PK3 - PK4 |
| AppleTree Early Learning Center PCS - Parklands at THEARC     | 8    | Early Childhood   | 1801 Mississippi Ave, SE           | PK3-PK4   |
| AppleTree Early Learning Center PCS - Southwest               | 6    | Early Childhood   | 801 7th St, SW                     | PK3 - PK4 |
| BASIS DC PCS  | 2    | Liberal Arts  | 410 8th St, NW                     | 5 - 12    |
| Breakthrough Montessori PCS                                   | 4    | Montessori  | 1244 Taylor St, NW                 | PK3 - 4   |
| Bridges PCS   | 5    | Early Childhood to Elementary; Special Education Focus                                      | 100 Gallatin St, NE                | PK3 - 5   |
| Capital City PCS - High School                                | 4    | Arts Integration; Project-Based Learning  | 100 Peabody St, NW                 | 9 - 12    |
| Capital City PCS - Lower School                               | 4    | Arts Integration; Project-Based Learning  | 100 Peabody St, NW                 | PK3 - 4   |
| Capital City PCS - Middle School                              | 4    | Arts Integration; Project-Based Learning  | 100 Peabody St, NW                 | 5 - 8     |
| Capital Village PCS   |      | High School Preparatory Curriculum  | 705 Edgewood St, NE                | 5 - 8     |
| Cedar Tree Academy PCS  | 8    | Early Childhood   | 701 Howard Rd, SE                  | PK3 - 2   |
| Center City PCS - Brightwood                                  | 4    | Liberal Arts; Humanities  | 6008 Georgia Ave, NW               | PK3 - 8   |
| Center City PCS - Capitol Hill                                | 6    | Liberal Arts; Humanities  | 1503 East Capitol St, SE           | PK3 - 8   |
| Center City PCS - Congress Heights                            | 8    | Liberal Arts; Humanities  | 220 Highview Pl, SE                | PK3 - 8   |
| Center City PCS - Petworth                                    | 4    | Liberal Arts; Humanities  | 510 Webster St, NW                 | PK3 - 8   |
| Center City PCS - Shaw  | 6    | Liberal Arts; Humanities  | 711 N St, NW                       | PK4 - 8   |
| Center City PCS - Trinidad                                    | 5    | Liberal Arts; Humanities  | 1217 West Virginia Ave, NE         | PK4 - 8   |
| Cesar Chavez PCS for Public Policy - Parkside High School     | 7    | Public Policy   | 3701 Hayes St, NE                  | 9 - 12    |
| Cesar Chavez PCS for Public Policy - Parkside Middle School   | 7    | Public Policy   | 3701 Hayes St, NE                  | 6 - 8     |
| Creative Minds International PCS                              | 5    | International Education; Inclusion; Arts Education/Integration                              | 3700 North Capitol St, NW          | PK3 - 8   |
| DC Bilingual PCS  | 5    | Dual Language; Arts Integration; Science, Technology, Engineering, Mathematics (STEM) Focus | 33 Riggs Rd, NE                    | PK3 - 5   |
| DC Prep PCS - Anacostia Elementary School                     | 8    | Interdisciplinary Curriculum  | 1409 V St, SE                      | PK3 - 3   |
| DC Prep PCS - Anacostia Middle School                         | 5    | Interdisciplinary Curriculum  | 2501 Martin Luther King Jr Ave, SE | 4 - 6     |
| DC Prep PCS - Benning Elementary School                       | 7    | Interdisciplinary Curriculum  | 100 41st St, NE                    | PK3 - 3   |
| DC Prep PCS - Benning Middle School                           | 7    | Interdisciplinary Curriculum  | 100 41st St, NE                    | 4 - 8     |
| DC Prep PCS - Edgewood Elementary School                      | 5    | Interdisciplinary Curriculum  | 707 Edgewood St, NE                | PK3 - 3   |
| DC Prep PCS - Edgewood Middle School                          | 5    | Interdisciplinary Curriculum  | 707 Edgewood St, NE                | 4 - 8     |
| DC Scholars PCS   | 7    | Interdisciplinary Curriculum  | 5601 Capitol St, SE                | PK3 - 8   |
| DC Wildflower PCS - The Riverseed School                      | TBD  | Montessori  | TBD                                | PK3 - PK4 |
| Digital Pioneers Academy PCS                                  | 7    | Computer Science; Diverse Out-of-School Experiences   | 709 12th St, SE                    | 6-10      |
| District of Columbia International School                     | 4    | Language Immersion; International Baccalaureate Curriculum                                  | 1400 Main Drive, NW                | 6 - 12    |
| E.L. Haynes PCS - Elementary School                           | 4    | Experiential Learning   | 4501 Kansas Ave, NW                | PK 3 - 4  |
| E.L. Haynes PCS - Middle School                               | 1    | Experiential Learning   | 3600 Georgia Ave, NW               | 5 - 8     |
| E.L. Haynes PCS - High School                                 | 4    | Experiential Learning   | 4501 Kansas Ave, NW                | 9 - 12    |
| Eagle Academy PCS - Capitol Riverfront                        | 6    | Science, Technology, Engineering, Mathematics (STEM) Focus                                  | 1017 New Jersey Ave, SE            | PK3 - 3   |
| Eagle Academy PCS - Congress Heights                          | 8    | Science, Technology, Engineering, Mathematics (STEM) Focus                                  | 3400 Wheeler Rd, SE                | PK3 - 3   |
| Early Childhood Academy PCS                                   | 8    | Science, Technology, Engineering, Mathematics (STEM) Focus                                  | 885 Barnaby St, SE                 | PK3 - 3   |
| Elsie Whitlow Stokes Community Freedom PCS - Brookland        | 5    | Dual Language   | 3700 Oakview Terrace, NE           | PK3 - 5   |
| Elsie Whitlow Stokes Community Freedom PCS - East End         | 7    | Dual Language   | 5600 East Capitol St, NE           | PK3-4     |
| Friendship PCS - Armstrong                                    | 5    | Reggio Emilia-Inspired Learning Center  | 111 O St, NW                       | PK3 - 8   |
| Friendship PCS - Blow Pierce Elementary                       | 7    | College Prep School   | 725 19th St, NE                    | PK3 - 3   |
| Friendship PCS - Blow Pierce Middle                           | 7    | College Prep School   | 725 19th St, NE                    | 4 - 8     |
| Friendship PCS - Chamberlain Elementary                       | 6    | Champions for Student Achievement   | 1345 Potomac Ave, SE               | PK3 - 3   |
| Friendship PCS - Chamberlain Middle                           | 6    | Champions for Student Achievement   | 1345 Potomac Ave, SE               | 4 - 8     |
| Friendship PCS - Collegiate Academy                           | 7    | Early College High School   | 4095 Minnesota Ave, NE             | 9 - 12    |
| Friendship PCS - Collegiate Online Academy                    | 4    | Virtual School  | Virtual School                     | K - 8     |

| SCHOOL NAME  | WARD | PROGRAM TYPE   | ADDRESS                            | GRADES    |
|--|------|--|------------------------------------|-----------|
| Friendship PCS- Ideal Elementary                               |      | Standards Based Extended Day   | 6130 North Capitol St NW           | PK3 - 3   |
| Friendship PCS - Ideal Middle                                  |      | Standards Based Extended Day   | 6130 North Capitol St NW           | 4 - 8     |
| Friendship PCS - Southeast Elementary                          | 8    | Every Child Ready Instructional Approach   | 645 Milwaukee Pl, SE               | PK3 - 3   |
| Friendship PCS - Southeast Middle                              | 8    | Every Child Ready Instructional Approach   | 645 Milwaukee Pl, SE               | 4-8       |
| Friendship PCS - Technology Preparatory High School            | 8    | Science, Technology, Engineering, Mathematics (STEM) Focus   | 2705 Martin Luther King Jr Ave, SE | 9 - 12    |
| Friendship PCS - Woodridge International Elementary            | 5    | International Baccalaureate  | 2959 Carlton Ave, NE               | PK3 - 3   |
| Friendship PCS - Woodridge International Middle                | 5    | International Baccalaureate  | 2959 Carlton Ave, NE               | 4 - 8     |
| Girls Global Academy PCS                                       | 2    | Career and Technical Education; Single Gender Campus   | 733 8th St, NW                     | 9 - 11    |
| Global Citizens PCS  | 7    | Dual Language Immersion  | 4095 Minnesota Ave, NE             | PK3 - K   |
| Harmony DC PCS - School of Excellence                          | 5    | Science, Technology, Engineering, and Mathematics (STEM) Focus   | 62 T St, NE                        | PK3 - 5   |
| Hope Community PCS - Tolson                                    | 5    | Expeditionary Learning (Art, Technology, Science Inquiry, and Music)   | 2917 8th St, NE                    | PK3 - 8   |
| Howard University Middle School of Mathematics and Science PCS | 1    | Math and Science Focus   | 405 Howard Pl, NW                  | 6 - 8     |
| I Dream PCS  | 7    | Restorative Justice Program  | 2220 Branch Ave, SE                | PK3 - 4   |
| IDEA PCS   | 7    | Leadership, Construction, and Design Focus; College Dual-Enrollment  | 1027 45th St, NE                   | 9 - 12    |
| Ingenuity Prep PCS   | 8    | Civic Leadership; Blended Learning; Early Childhood  | 4600 Livingston Rd, SE             | PK3 - 8   |
| Inspired Teaching Demonstration PCS                            | 5    | Inquiry-Based, Whole Child, and Social Justice Focus   | 200 Douglas St, NE                 | PK3 - 8   |
| Kingsman Academy PCS   | 6    | Project-Based; Personalized Learning   | 1375 ST, NE                        | 6 - 12    |
| KIPP DC - AIM Academy PCS                                      | 8    | High School Preparatory Curriculum; Leadership and Character Development                                       | 2600 Douglas Rd, SE                | 5 - 8     |
| KIPP DC - Arts and Technology Academy PCS                      | 7    | Play-Based Academic and Social Emotional Learning Curriculum   | 5300 Blaine St, NE                 | PK3 - K   |
| KIPP DC - College Preparatory Academy PCS                      | 5    | Global Readiness Based Curriculum; Career and College Coaching; Advanced Placement Courses; Freshman Academies | 1405 Brentwood Parkway, NE         | 9 - 12    |
| KIPP DC - Connect Academy PCS                                  | 5    | Play-Based Academic and Social Emotional Learning Curriculum   | 1375 Mount Olivet Rd, NE           | PK3 - K   |
| KIPP DC - Discover Academy PCS                                 | 8    | Play-Based Academic and Social Emotional Learning Curriculum   | 2600 Douglas Rd, SE                | PK3 - K   |
| KIPP DC - Grow Academy PCS                                     | 6    | Play-Based Academic and Social Emotional Learning Curriculum   | 421 P St, NW                       | PK3 - K   |
| KIPP DC - Heights Academy PCS                                  | 8    | Rigorous Academic Curriculum; Character and Whole-Child Approach   | 2600 Douglas Rd, SE                | 1 - 4     |
| KIPP DC - Honor Academy PCS                                    | 8    |  | 3301 Wheeler Rd, SE                | 5 - 8     |
| KIPP DC - KEY Academy PCS                                      | 7    | High School Preparatory Curriculum; Leadership and Character Development                                       | 4801 Benning Rd, SE                | 5 - 8     |
| KIPP DC - Lead Academy PCS                                     | 6    | Rigorous Academic Curriculum; Character and Whole-Child Approach   | 421 P St, NW                       | 1 - 4     |
| KIPP DC - LEAP Academy PCS                                     | 7    | Play-Based Academic and Social Emotional Learning Curriculum   | 4801 Benning Rd, SE                | PK3 - PK4 |
| KIPP DC - Legacy College Preparatory PCS                       | 7    |  | 3301 Wheeler Rd, SE                | 9 - 12    |
| KIPP DC - Inspire Learning Academy PCS                         | 7    | Blended Learning;  | 3301 Wheeler Rd, SE                | 1 - 4     |
| KIPP DC - Northeast Academy PCS                                | 5    | High School Preparatory Curriculum; Leadership and Character Development                                       | 1375 Mount Olivet Rd, NE           | 5 - 8     |
| KIPP DC - Pride Academy PCS                                    | 8    |  | 3301 Wheeler Rd, SE                | PK3 - K   |
| KIPP DC - Promise Academy PCS                                  | 7    | Rigorous Academic Curriculum; Character and Whole-Child Approach   | 4801 Benning Rd, SE                | K - 4     |
| KIPP DC - Quest Academy PCS                                    | 7    | Rigorous Academic Curriculum; Character and Whole-Child Approach   | 5300 Blaine St, NE                 | 1 - 4     |
| KIPP DC - Spring Academy PCS                                   | 5    | Rigorous Academic Curriculum; Character and Whole-Child Approach   | 1375 Mount Olivet Rd, NE           | 1 - 4     |
| KIPP DC - Valor Academy PCS                                    | 7    | High School Preparatory Curriculum; Leadership and Character Development                                       | 5300 Blaine St, NE                 | 5 - 8     |
| KIPP DC - WILL Academy PCS                                     | 6    | High School Preparatory Curriculum; Leadership and Character Development                                       | 421 P St, NW                       | 5 - 8     |
| Latin American Montessori Bilingual PCS                        | 4,5  | Montessori; Language Immersion   | 5000 14th St, NW                   | PK3 - 5   |
| Learn DC   | 8    |  | 100 Duncan St, SW                  | PK3 - 1   |
| Lee Montessori PCS - East End                                  | 8    | Montessori   | 2501 MLK Jr Ave, SE                | PK3-2     |
| Lee Montessori PCS   | 5    | Montessori   | 3025 4th St, NE                    | PK3-6     |
| Mary McLeod Bethune Day Academy PCS - Brookland                | 5    | Arts Integration; Language Immersion; International Baccalaureate  | 1404 Jackson St, NE                | PK3 - 8   |

| SCHOOL NAME  | WARD | PROGRAM TYPE  | ADDRESS                         | GRADES      |
|--|------|---|---------------------------------|-------------|
| Mary McLeod Bethune Day Academy PCS - 16th St      |      |   | 5413 16th St, NW                | PK3 - 4     |
| Maya Angelou PCS - High School                     | 7    | Blended and Individualized Learning; Socio-emotional Learning   | 5600 East Capitol St, NE        | 9 - 12      |
| Meridian PCS                                       | 1    | Interdisciplinary Curriculum  | 2120 13th St, NW                | PK3 - 5     |
| Meridian PCS - Middle School                       |      | Interdisciplinary Curriculum  | 770 Kenyon St, NW               | 6 - 8       |
| Monument Academy PCS                               | 6    | Boarding school and Wraparound with Foster Care/At-Risk Focus   | 500 19th St, NE                 | 5 - 8       |
| Mundo Verde Bilingual PCS - J.F. Cook Campus       | 5    | Dual Language; Expeditionary Learning; Education for Sustainability Focus                                   | 30 P St, NW                     | PK3 - 5     |
| Mundo Verde Bilingual PCS - Calle Ocho Campus      | 5    | Dual Language; Expeditionary Learning; Education for Sustainability Focus                                   | 4401 8th St, NE                 | PK3 - 3     |
| Paul PCS - International High School               | 4    | Academics, Arts, Athletics, and Global Enrichment   | 5800 8th St, NW                 | 9 - 12      |
| Paul PCS - Middle School                           | 4    | Academics, Arts, Athletics, and Global Enrichment   | 5800 8th St, NW                 | 6 - 8       |
| Perry Street Preparatory PCS                       | 5    | Interdisciplinary Curriculum; Extended Academic Time  | 1800 Perry St, NE               | PK3 - 8     |
| Richard Wright PCS for Journalism and Media Arts   | 6    | Journalism and Media Arts   | 475 School St, SW               | 8 - 12      |
| Rocketship PCS - Rise Academy                      | 8    | Personalized and Blended Learning   | 2335 Raynolds Pl, SE            | PK3 - 5     |
| Rocketship PCS - Legacy Prep                       | 7    | Personalized and Blended Learning   | 4250 Massachusetts Ave, SE      | PK3 - 5     |
| Rocketship PCS - Infinity Prep                     | 5    | Personalized and Blended Learning   | 5450 3rd St, NE                 | PK3 - 4     |
| Roots PCS  | 4    | African Centered Curriculum   | 15 Kennedy St, NW               | PK3 - 5     |
| SEED PCS of Washington DC                          | 7    | Boarding School   | 4300 C St, SE                   | 9 - 12      |
| Sela PCS   | 4    | Language Immersion  | 6015-17 Chillum Pl, NE          | PK3 - 5     |
| Shining Stars Montessori Academy PCS               | 5    | Montessori  | 1240 Randolph St, NE            | PK3 - 6     |
| Social Justice PCS                                 | 5    | Restorative Justice Program   | 2202 15th St, NE                | 5 - 8       |
| Statesmen College Preparatory Academy for Boys PCS | 8    | Boy-Friendly Academic Enviornment, Improving Academic Skills, Social Competencies, and Personal Development | 4600 Livingston Rd, SE          | 4-8         |
| St. Coletta Special Education PCS                  | 7    | Special Education   | 1901 Independence Ave, SE       | Ages 3 - 22 |
| The Children's Guild DC PCS                        | 5    | Personalized Learning   | 2146 24th Place NE              | K - 8       |
| The Sojourner Truth School PCS                     | 5    | Advanced Placement; Blended Learning  | 1800 Perry St, NE               | 6 - 8       |
| Thurgood Marshall Academy PCS                      | 8    | Public Policy and Law Focus   | 2427 Martin Luther King Ave, SE | 9 - 12      |
| Two Rivers PCS - 4th Street                        | 6    | Expeditionary Learning  | 1227 4th St, NE                 | PK3 - 5     |
| Two Rivers PCS - Young                             | 5    | Expeditionary Learning  | 820 26th St, NE                 | PK3 - 8     |
| Washington Global PCS                              | 6    | International Curriculum; Individualized Learning   | 525 School St, SW               | 6 - 8       |
| Washington Latin PCS - Middle School               | 4    | Classical Education   | 5200 2nd St, NW                 | 5 - 8       |
| Washington Latin PCS - Upper School                | 4    | Classical Education   | 5200 2nd St, NW                 | 9 - 12      |
| Washington Leadership Academy PCS                  | 5    | Tech; Coding; Computer Science; Leadership Development  | 3015 4th St, NE                 | 9 - 10      |
| Washington Yu Ying PCS                             | 5    | Mandarin Chinese Language Immersion; International Baccalaureate  | 220 Taylor St, NE               | PK3 - 5     |

## Adult Education

| SCHOOL NAME                                    | WARD | PROGRAM TYPE  | ADDRESS                            | AGES SERVED       |
|--|------|---|------------------------------------|-------------------|
| Academy of Hope Adult PCS                      | 5    | Literacy, GED Preparation, Computer Skills, Dual Enrollment; day and evening  | 2315 18th Pl NE                    | Adult             |
| Briya PCS                                      | 5    | Two-Generation Program; English as a Second Language; Child Development Associate; Medical Assistant  | 233 Ontario Rd, NW                 | PK3 - PK4 & Adult |
| Carlos Rosario International PCS               | 5    | Literacy; English as a Second Language; Computer Skills; Culinary Arts, Nurse Aide, GED and Citizenship Preparation                         | 512 V St, NE                       | Adult             |
| Community College Preparatory Academy PCS      | 8    | HVAC Training; National Customer Service; Computer Skills; CompTIA Help Desk; Microsoft Office Suite; Dual College Enrollment               | 2405 Martin Luther King Jr Ave, SE | Adult             |
| Goodwill Excel Center PCS                      | 2    | Transportation Assistance; Child Care and Flexible Class Schedules  | 1776 G St, NW                      | 9 -- 12           |
| LAYC Career Academy PCS                        | 1    | Medical Assistant; Computer Skills; Dual Enrollment; GED Preparation; English as a Second Language; Literacy and Numeracy Skill Development | 3224 16th St, NW                   | Adult             |
| Maya Angelou PCS - Young Adult Learning Center | 7    | General Education Development (GED)   | 5600 East Capitol St, NE           | Adult             |
| The Family Place PCS                           | 1    | ESL, Child Development Associate, Workforce Development, Spanish, Literacy, 2-Gen Approach  | 3309 16th St, NW                   | Adult             |
| The Next Step/El Proximo Paso PCS              | 1    | GED Preparation; English as a Second Language; Dual College Enrollment; Day and Evening Options; Transportation and Childcare Assistance    | 3047 15th St, NW                   | Adult             |
| YouthBuild PCS                                 | 1    | English as Second Language; Construction Education; Dual enrollment   | 3220 16th St, NW                   | Adult             |



# DC PCSB and COVID-19 Supports

In the 2022-23 school year, DC PCSB will continue to ensure schools have access to the resources needed to support student and staff well-being. Visit the schools website to read their safety protocols and procedures.



## Apply to Attend at Public Charter School

My School DC is the common application and common lottery for the Districts traditional and public charter schools. Learn about, apply, and enroll at a public charter school [here](#).

### SY2022-23 Lottery Key Dates



**DECEMBER 11, 2021**

EdFEST – DC's annual public school fair



**DECEMBER 13, 2021**

My School DC lottery application opens



**FEBRUARY 1, 2022**

Application deadline (Grades 9-12)



**MARCH 1, 2022**

Application deadline (PK3 – Grade 8)



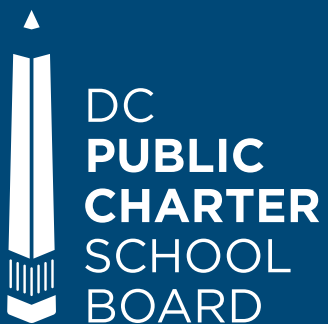
**APRIL 1, 2022**

Lottery results are released



**MAY 2, 2022**

Enrollment deadline for matched students



3333 14th Street, NW, Suite 210  
Washington, DC 20010  
202-328-2660  
[dcpublic@dcpcsb.org](mailto:dcpublic@dcpcsb.org)  
[dcpcsb.org](http://dcpcsb.org)

 @DCPCSB  
 @DCPCSB  
 /DCPCSB